



Amphenol Broadband Solutions offers a complete line of discrete Optical Splitter Components for a wide range of uses in various optical network designs.

The product family includes splitters from 2 to 32 output fibers. Packaging has been designed to provide stable optical performance across a wide operating temperature range.

Planar Lightwave Circuit (PLC) technology is utilized for all splitters with 4 or more output fibers. Fused Biconical Taper (FBT) technology is used for splitters with 2 and 3 output fibers. Devices have been tested to Telcordia GR-209 and GR-1221 requirements.

Ordering information provided below includes descriptions of adapters, holder modules and splice trays used for splitter integration into various splice closures.

### Features:

- FBT and PLC splitter types
- Low optical insertion loss
- SC and LC connectors available
- Asymmetrical split ratios available for 1x2 splitters

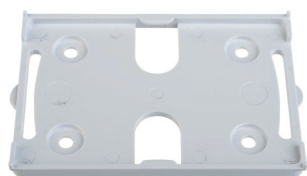


Splitter Packaging Examples

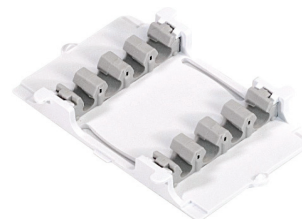
### Ordering Information:

CIFA Number	Description	ABS Part Number
34606	1x2 FBT Splitter, 250um 2mtr fiber pigtails, no connectors, Kit with MF Module and D Tray Adapter	ASBPSP1026401
34607	1x4 PLC Splitter, 250um 2mtr fiber pigtails, no connectors, Kit with MF Module and D Tray Adapter	1026386
34608	1x8 PLC Splitter, 250um 2mtr fiber pigtails, no connectors, Kit with MF Module and D Tray Adapter	ASBPSP1026387
34609	1x16 PLC Splitter, 250um 2mtr fiber pigtails, no connectors, Kit with MF Module and D Tray Adapter	ASBPSP1026388
34610	1x32 PLC Splitter, 250um 2mtr fiber pigtails, no connectors, Kit with MF Module and D Tray Adapter	1026389

Kits identified above include the splitter plus the following:



Module Adapter



MF Module  
(Holds PLC Splitter & Mass Splice Sleeves)