

Amphenol's node Cable Assemblies link optical transport cable to optical processing equipment. This connection is critical and requires an environmental seal between the cable and the node feed-thru.

Amphenol's node cables utilize a unique IP68 rated stainless steel feed-thru adapter, featuring an anti-twist coupling body.

Our standard node assemblies use either a dielectric OSP cable or an armored OSP cable. Their multiple O-rings ensure a fully sealed cable and node.

Features:

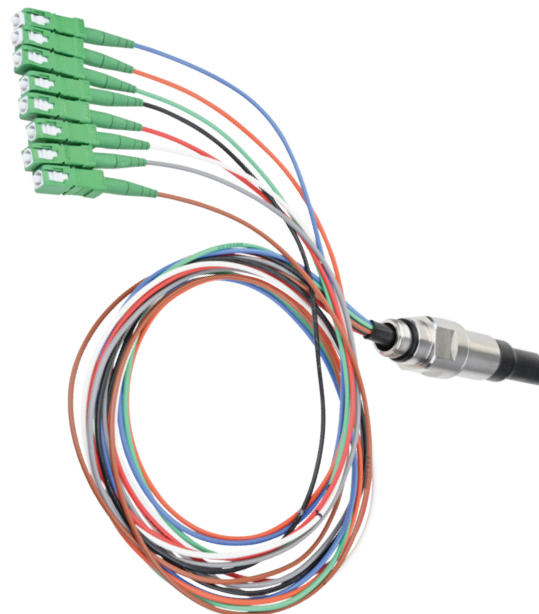
- Available with SC, LC
- Available with 1.6 mm fan-out
- Fiber counts 12
- Factory terminated for high performance
- Stainless steel fitting
- Potted furaction for secure environmental protection
- No installation tools required
- Feed-thru body features and anti-twist design

Benefits:

- Multiple connector options available
- Multiple cable types available
- Multiple fiber counts available
- Reliable performance in field
- Added strength and environmental durability
- Reliable seal
- Quick and easy installation
- Allows tightening of node without twisting cable

Industry Specifications

Weather Rating:	IP68
Operating Temperature:	-40° C to +85° C
Mating Cycles:	100 Minimum
Cable Retention:	445 N (100 lbs)
Strain Relief:	100 lbf
Accepted Cable Diameter:	4.8 mm - 7.0 mm
Submersible:	Up to 20 ft of water head
Threading:	Standard SCTE 5/8" - 24 UNEF



Node Cable

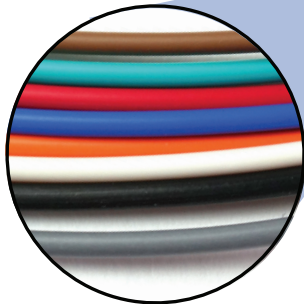
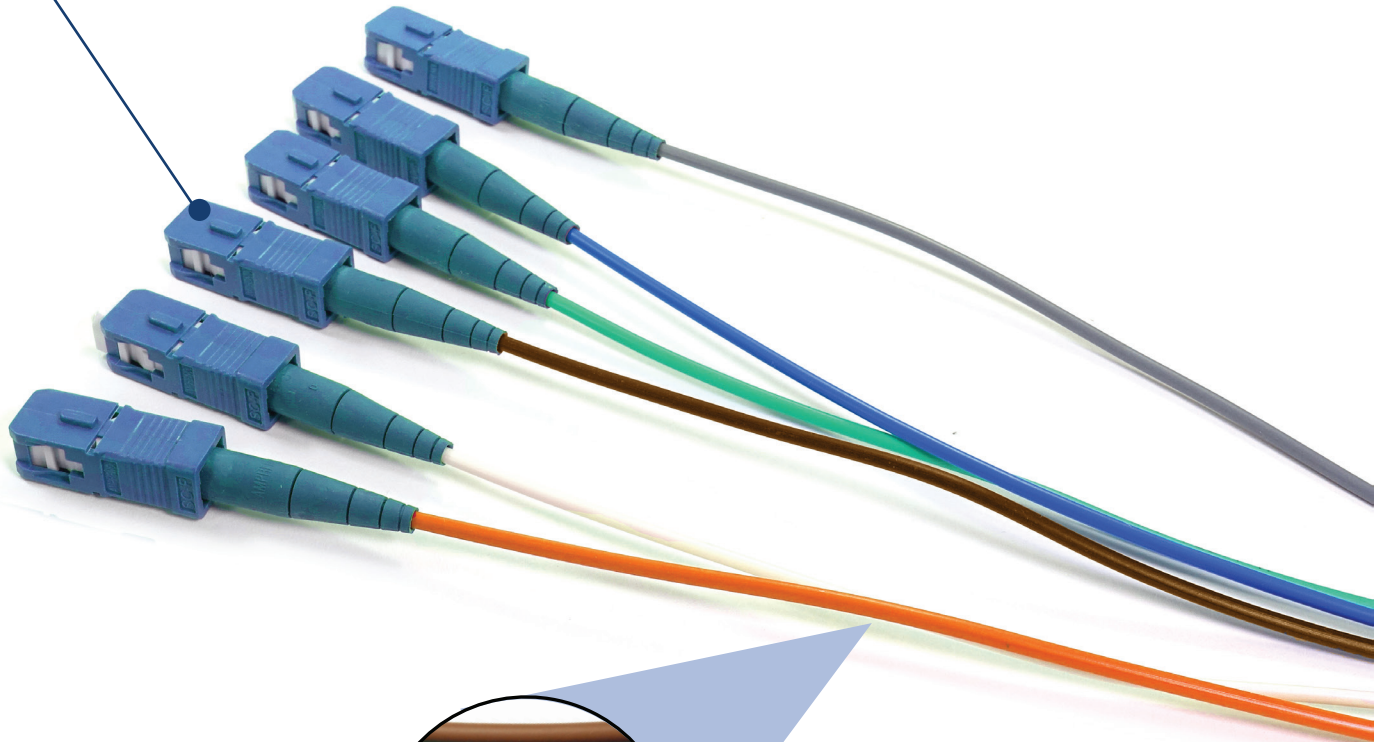
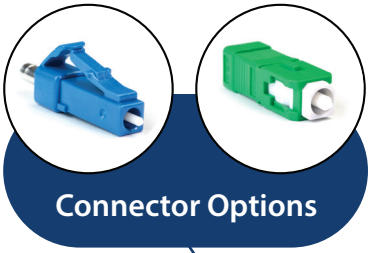
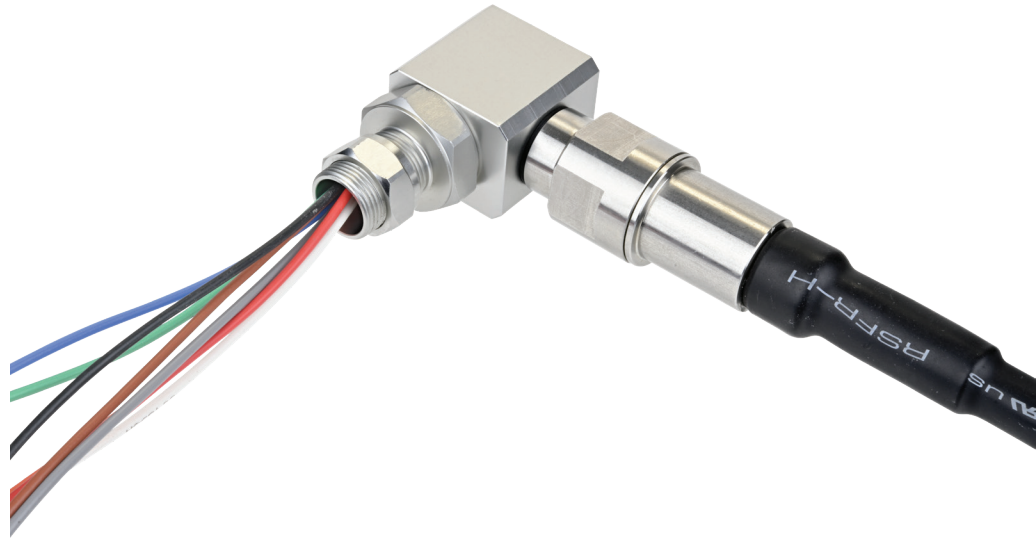


Node & Assembly

Key Features and Options:

Anti-Twist Feed-Thru Body

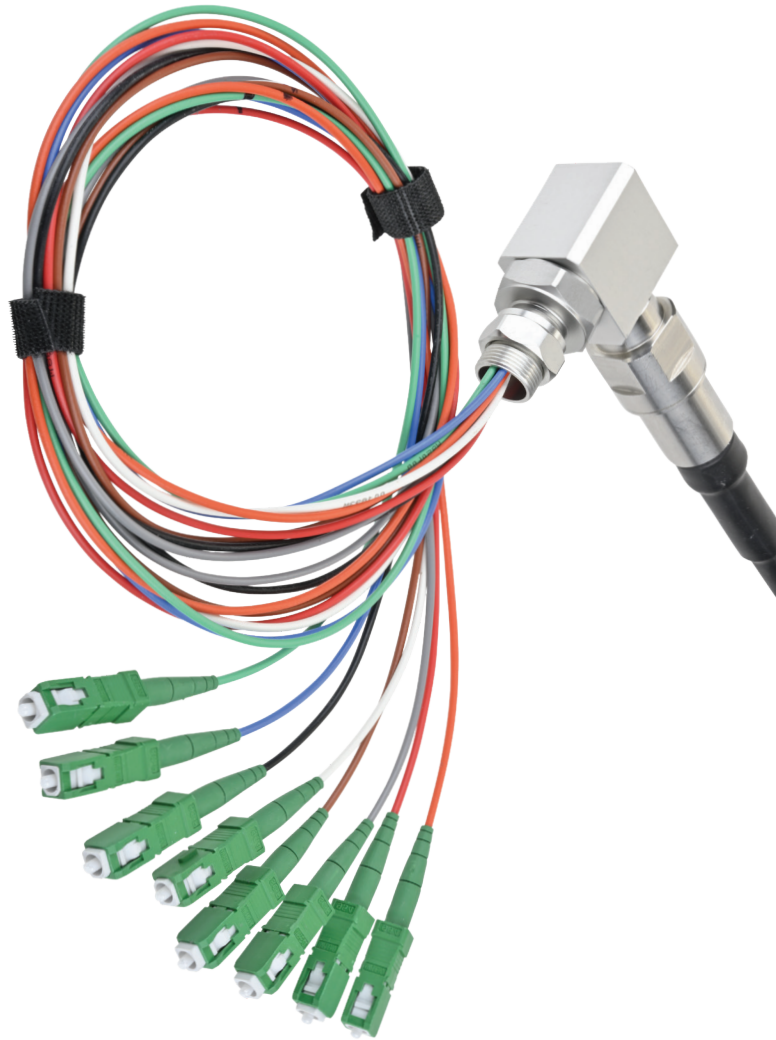
1. IP68 Environmental Seal
2. PG13.5 or 5/8-24 UNEF Threading
3. Color Coded Fanout



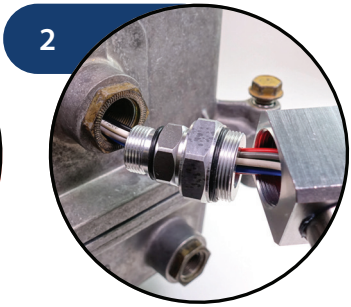
Step-By-Step Field Installation

Tools: Standrd 7/8" wrench

Warning: Do not exceed 80- 100 lbf in torque



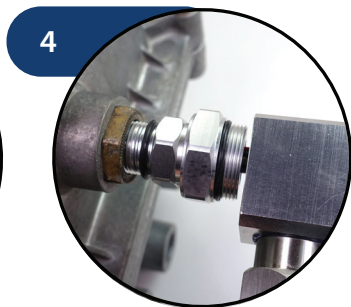
1 Feed connectors through node entry port



2 Feed cable into node to remove excess slack



3 Thread coupling fitting a full turn into node



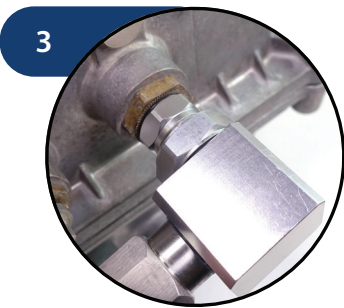
4 Align coupler to coupling fitting



1 Thread coupling fitting into node (due to left-handed threading, coupler will thread simultaneously)



2 Tighten coupling nut to secure in final position



3 Field installation complete

Optical Fiber OS2		Technical Specifications	
Parameter	Specification	Weather Rating:	IP68
Fiber Name:	Single-Mode (OS2)	Insertion Loss	
Fiber Category:	G.652.D / G.657.A1	Singlemode Ultra Polish (UPC)	≤ 0.20 dB typical
Wavelengths:	1310 nm / 1383 nm / 1500 nm	Singlemode Angle Polish (APC)	≤ 0.30 dB typical
Maximum Attenuation:	0.4 db/km / 0.4 dB/km / 0.3 db/km	Return Loss	
		Singlemode Ultra Polish (UPC)	-55 dB
		Singlemode Angle Polish (APC)	-65 dB

Ordering Information

CIFA No.	Description	ABS No.
307854	12 Fiber Count - 4 SC/APC, 4 LC/UPC, 4 non-terminated - straight, Jacket - Armored, Breakout = 42", 100 Ft	R1000-0100F
307900	12 Fiber Count - 4 SC/APC, 4 LC/UPC, 4 non-terminated - straight, Jacket - Armored, Breakout = 42", 250 Ft	R1000-0250F
307871	12 Fiber Count - 4 SC/APC, 4 LC/UPC, 4 non-terminated - straight, Jacket - Armored, Breakout = 42", 500 Ft	R1000-0500F
307901	12 Fiber Count - 4 SC/APC, 4 LC/UPC, 4 non-terminated - straight, Jacket - Armored, Breakout = 42", 750 Ft	R1000-0750F
307902	12 Fiber Count - 4 SC/APC, 4 LC/UPC, 4 non-terminated - straight, Jacket - Armored, Breakout = 42", 1000 Ft	R1000-1000F
307873	12 Fiber Count - 4 SC/APC, 4 LC/UPC, 4 non-terminated - straight, Jacket - Armored, Breakout = 42", 1250 Ft	R1000-1250F
307870	12 Fiber Count - 4 SC/APC, 4 LC/UPC, 4 non-terminated - straight, Jacket - Armored, Breakout = 42", 1500 Ft	R1000-1500F
307872	12 Fiber Count - 4 SC/APC, 4 LC/UPC, 4 non-terminated - straight, Jacket - Armored, Breakout = 42", 3000 Ft	R1000-3000F
307938	12 Fiber Count - 4 SC/APC, 4 LC/UPC, 4 non-terminated - 90 degree, Jacket - Armored, Breakout = 42", 100 Ft	R1001-0100F
307904	12 Fiber Count - 4 SC/APC, 4 LC/UPC, 4 non-terminated - 90 degree, Jacket - Armored, Breakout = 42", 250 Ft	R1001-0250F
307903	12 Fiber Count - 4 SC/APC, 4 LC/UPC, 4 non-terminated - 90 degree, Jacket - Armored, Breakout = 42", 500 Ft	R1001-0500F
307875	12 Fiber Count - 4 SC/APC, 4 LC/UPC, 4 non-terminated - 90 degree, Jacket - Armored, Breakout = 42", 750 Ft	R1001-0750F
307922	12 Fiber Count - 4 SC/APC, 4 LC/UPC, 4 non-terminated - 90 degree, Jacket - Armored, Breakout = 42", 1000 Ft	R1001-1000F
307856	12 Fiber Count - 4 SC/APC, 4 LC/UPC, 4 non-terminated - 90 degree, Jacket - Armored, Breakout = 42", 1250 Ft	R1001-1250F
307894	12 Fiber Count - 4 SC/APC, 4 LC/UPC, 4 non-terminated - 90 degree, Jacket - Armored, Breakout = 42", 1500 Ft	R1001-1500F
307928	12 Fiber Count - 4 SC/APC, 4 LC/UPC, 4 non-terminated - 90 degree, Jacket - Armored, Breakout = 42", 3000 Ft	R1001-3000F
307895	12 Fiber Count - 4 SC/APC, 4 LC/UPC, 4 non-terminated - straight, Jacket - All Dielectric, Breakout = 42", 100 Ft	R1002-0100F
307857	12 Fiber Count - 4 SC/APC, 4 LC/UPC, 4 non-terminated - straight, Jacket - All Dielectric, Breakout = 42", 250 Ft	R1002-0250F
307929	12 Fiber Count - 4 SC/APC, 4 LC/UPC, 4 non-terminated - straight, Jacket - All Dielectric, Breakout = 42", 500 Ft	R1002-0500F
307930	12 Fiber Count - 4 SC/APC, 4 LC/UPC, 4 non-terminated - straight, Jacket - All Dielectric, Breakout = 42", 750 Ft	R1002-0750F
307859	12 Fiber Count - 4 SC/APC, 4 LC/UPC, 4 non-terminated - straight, Jacket - All Dielectric, Breakout = 42", 1000 Ft	R1002-1000F
307861	12 Fiber Count - 4 SC/APC, 4 LC/UPC, 4 non-terminated - straight, Jacket - All Dielectric, Breakout = 42", 1250 Ft	R1002-1250F
307931	12 Fiber Count - 4 SC/APC, 4 LC/UPC, 4 non-terminated - straight, Jacket - All Dielectric, Breakout = 42", 1500 Ft	R1002-1500F
307932	12 Fiber Count - 4 SC/APC, 4 LC/UPC, 4 non-terminated - straight, Jacket - All Dielectric, Breakout = 42", 3000 Ft	R1002-3000F
307933	12 Fiber Count - 4 SC/APC, 4 LC/UPC, 4 non-terminated - 90 degree, Jacket - All Dielectric, Breakout = 42", 100 Ft	R1003-0100F
307920	12 Fiber Count - 4 SC/APC, 4 LC/UPC, 4 non-terminated - 90 degree, Jacket - All Dielectric, Breakout = 42", 250 Ft	R1003-0250F
307936	12 Fiber Count - 4 SC/APC, 4 LC/UPC, 4 non-terminated - 90 degree, Jacket - All Dielectric, Breakout = 42", 500 Ft	R1003-0500F
307898	12 Fiber Count - 4 SC/APC, 4 LC/UPC, 4 non-terminated - 90 degree, Jacket - All Dielectric, Breakout = 42", 750 Ft	R1003-0750F
307899	12 Fiber Count - 4 SC/APC, 4 LC/UPC, 4 non-terminated - 90 degree, Jacket - All Dielectric, Breakout = 42", 1000 Ft	R1003-1000F
307864	12 Fiber Count - 4 SC/APC, 4 LC/UPC, 4 non-terminated - 90 degree, Jacket - All Dielectric, Breakout = 42", 1250 Ft	R1003-1250F
307869	12 Fiber Count - 4 SC/APC, 4 LC/UPC, 4 non-terminated - 90 degree, Jacket - All Dielectric, Breakout = 42", 1500 Ft	R1003-1500F
307865	12 Fiber Count - 4 SC/APC, 4 LC/UPC, 4 non-terminated - 90 degree, Jacket - All Dielectric, Breakout = 42", 3000 Ft	R1003-3000F

Ordering Information cont'd

CIFA No.	Description	ABS Part No.
307937	12 Fiber Count - 8 LC/UPC , 4 non-terminated - straight, Jacket - Armored, Breakout = 42", 100 Ft	R1004-0100F
307921	12 Fiber Count - 8 LC/UPC , 4 non-terminated - straight, Jacket - Armored, Breakout = 42", 250 Ft	R1004-0250F
307868	12 Fiber Count - 8 LC/UPC , 4 non-terminated - straight, Jacket - Armored, Breakout = 42", 500 Ft	R1004-0500F
307908	12 Fiber Count - 8 LC/UPC , 4 non-terminated - straight, Jacket - Armored, Breakout = 42", 750 Ft	R1004-0750F
307909	12 Fiber Count - 8 LC/UPC , 4 non-terminated - straight, Jacket - Armored, Breakout = 42", 1000 Ft	R1004-1000F
307910	12 Fiber Count - 8 LC/UPC , 4 non-terminated - straight, Jacket - Armored, Breakout = 42", 1250 Ft	R1004-1250F
307917	12 Fiber Count - 8 LC/UPC , 4 non-terminated - straight, Jacket - Armored, Breakout = 42", 1500 Ft	R1004-1500F
307896	12 Fiber Count - 8 LC/UPC , 4 non-terminated - straight, Jacket - Armored, Breakout = 42", 3000 Ft	R1004-3000F
307897	12 Fiber Count - 8 LC/UPC , 4 non-terminated - 90 degree, Jacket - Armored, Breakout = 42", 100 Ft	R1005-0100F
307855	12 Fiber Count - 8 LC/UPC , 4 non-terminated - 90 degree, Jacket - Armored, Breakout = 42", 250 Ft	R1005-0250F
307934	12 Fiber Count - 8 LC/UPC , 4 non-terminated - 90 degree, Jacket - Armored, Breakout = 42", 500 Ft	R1005-0500F
307935	12 Fiber Count - 8 LC/UPC , 4 non-terminated - 90 degree, Jacket - Armored, Breakout = 42", 750 Ft	R1005-0750F
307918	12 Fiber Count - 8 LC/UPC , 4 non-terminated - 90 degree, Jacket - Armored, Breakout = 42", 1000 Ft	R1005-1000F
307858	12 Fiber Count - 8 LC/UPC , 4 non-terminated - 90 degree, Jacket - Armored, Breakout = 42", 1250 Ft	R1005-1250F
307866	12 Fiber Count - 8 LC/UPC , 4 non-terminated - 90 degree, Jacket - Armored, Breakout = 42", 1500 Ft	R1005-1500F
307919	12 Fiber Count - 8 LC/UPC , 4 non-terminated - 90 degree, Jacket - Armored, Breakout = 42", 3000 Ft	R1005-3000F
307867	12 Fiber Count - 8 LC/UPC , 4 non-terminated - straight, Jacket - All Dielectric, Breakout = 42", 100 Ft	R1006-0100F
307860	12 Fiber Count - 8 LC/UPC , 4 non-terminated - straight, Jacket - All Dielectric, Breakout = 42", 250 Ft	R1006-0250F
307888	12 Fiber Count - 8 LC/UPC , 4 non-terminated - straight, Jacket - All Dielectric, Breakout = 42", 500 Ft	R1006-0500F
307915	12 Fiber Count - 8 LC/UPC , 4 non-terminated - straight, Jacket - All Dielectric, Breakout = 42", 750 Ft	R1006-0750F
307889	12 Fiber Count - 8 LC/UPC , 4 non-terminated - straight, Jacket - All Dielectric, Breakout = 42", 1000 Ft	R1006-1000F
307890	12 Fiber Count - 8 LC/UPC , 4 non-terminated - straight, Jacket - All Dielectric, Breakout = 42", 1250 Ft	R1006-1250F
307892	12 Fiber Count - 8 LC/UPC , 4 non-terminated - straight, Jacket - All Dielectric, Breakout = 42", 1500 Ft	R1006-1500F
307948	12 Fiber Count - 8 LC/UPC , 4 non-terminated - straight, Jacket - All Dielectric, Breakout = 42", 3000 Ft	R1006-3000F
307916	12 Fiber Count - 8 LC/UPC , 4 non-terminated - 90 degree, Jacket - All Dielectric, Breakout = 42", 100 Ft	R1007-0100F
307891	12 Fiber Count - 8 LC/UPC , 4 non-terminated - 90 degree, Jacket - All Dielectric, Breakout = 42", 250 Ft	R1007-0250F
307893	12 Fiber Count - 8 LC/UPC , 4 non-terminated - 90 degree, Jacket - All Dielectric, Breakout = 42", 500 Ft	R1007-0500F
307949	12 Fiber Count - 8 LC/UPC , 4 non-terminated - 90 degree, Jacket - All Dielectric, Breakout = 42", 750 Ft	R1007-0750F
307862	12 Fiber Count - 8 LC/UPC , 4 non-terminated - 90 degree, Jacket - All Dielectric, Breakout = 42", 1000 Ft	R1007-1000F
307863	12 Fiber Count - 8 LC/UPC , 4 non-terminated - 90 degree, Jacket - All Dielectric, Breakout = 42", 1250 Ft	R1007-1250F
307911	12 Fiber Count - 8 LC/UPC , 4 non-terminated - 90 degree, Jacket - All Dielectric, Breakout = 42", 1500 Ft	R1007-1500F
307912	12 Fiber Count - 8 LC/UPC , 4 non-terminated - 90 degree, Jacket - All Dielectric, Breakout = 42", 3000 Ft	R1007-3000F
307877	12 Fiber Count - 6 SC/APC, 6 LC/UPC - straight, Jacket - Armored, Breakout = 42", 100 Ft	R1008-0100F
307939	12 Fiber Count - 6 SC/APC, 6 LC/UPC - straight, Jacket - Armored, Breakout = 42", 250 Ft	R1008-0250F
307940	12 Fiber Count - 6 SC/APC, 6 LC/UPC - straight, Jacket - Armored, Breakout = 42", 500 Ft	R1008-0500F
307879	12 Fiber Count - 6 SC/APC, 6 LC/UPC - straight, Jacket - Armored, Breakout = 42", 750 Ft	R1008-0750F
307905	12 Fiber Count - 6 SC/APC, 6 LC/UPC - straight, Jacket - Armored, Breakout = 42", 1000 Ft	R1008-1000F
307906	12 Fiber Count - 6 SC/APC, 6 LC/UPC - straight, Jacket - Armored, Breakout = 42", 1250 Ft	R1008-1250F
307874	12 Fiber Count - 6 SC/APC, 6 LC/UPC - straight, Jacket - Armored, Breakout = 42", 1500 Ft	R1008-1500F
307923	12 Fiber Count - 6 SC/APC, 6 LC/UPC - straight, Jacket - Armored, Breakout = 42", 3000 Ft	R1008-3000F
307881	12 Fiber Count - 6 SC/APC, 6 LC/UPC - 90 degree, Jacket - Armored, Breakout = 42", 100 Ft	R1009-0100F
307924	12 Fiber Count - 6 SC/APC, 6 LC/UPC - 90 degree, Jacket - Armored, Breakout = 42", 250 Ft	R1009-0250F

Ordering Information cont'd

CIFA No.	Description	ABS Part No.
307943	12 Fiber Count - 6 SC/APC, 6 LC/UPC - 90 degree, Jacket - Armored, Breakout = 42", 500 Ft	R1009-0500F
307878	12 Fiber Count - 6 SC/APC, 6 LC/UPC - 90 degree, Jacket - Armored, Breakout = 42", 750 Ft	R1009-0750F
307913	12 Fiber Count - 6 SC/APC, 6 LC/UPC - 90 degree, Jacket - Armored, Breakout = 42", 1000 Ft	R1009-1000F
307914	12 Fiber Count - 6 SC/APC, 6 LC/UPC - 90 degree, Jacket - Armored, Breakout = 42", 1250 Ft	R1009-1250F
307880	12 Fiber Count - 6 SC/APC, 6 LC/UPC - 90 degree, Jacket - Armored, Breakout = 42", 1500 Ft	R1009-1500F
307907	12 Fiber Count - 6 SC/APC, 6 LC/UPC - 90 degree, Jacket - Armored, Breakout = 42", 3000 Ft	R1009-3000F
307944	12 Fiber Count - 6 SC/APC, 6 LC/UPC - straight, Jacket - All Dielectric, Breakout = 42", 100 Ft	R1010-0100F
307882	12 Fiber Count - 6 SC/APC, 6 LC/UPC - straight, Jacket - All Dielectric, Breakout = 42", 250 Ft	R1010-0250F
307884	12 Fiber Count - 6 SC/APC, 6 LC/UPC - straight, Jacket - All Dielectric, Breakout = 42", 500 Ft	R1010-0500F
307945	12 Fiber Count - 6 SC/APC, 6 LC/UPC - straight, Jacket - All Dielectric, Breakout = 42", 750 Ft	R1010-0750F
307883	12 Fiber Count - 6 SC/APC, 6 LC/UPC - straight, Jacket - All Dielectric, Breakout = 42", 1000 Ft	R1010-1000F
307946	12 Fiber Count - 6 SC/APC, 6 LC/UPC - straight, Jacket - All Dielectric, Breakout = 42", 1250 Ft	R1010-1250F
307926	12 Fiber Count - 6 SC/APC, 6 LC/UPC - straight, Jacket - All Dielectric, Breakout = 42", 1500 Ft	R1010-1500F
307885	12 Fiber Count - 6 SC/APC, 6 LC/UPC - straight, Jacket - All Dielectric, Breakout = 42", 3000 Ft	R1010-3000F
307947	12 Fiber Count - 6 SC/APC, 6 LC/UPC - 90 degree, Jacket - All Dielectric, Breakout = 42", 100 Ft	R1011-0100F
307927	12 Fiber Count - 6 SC/APC, 6 LC/UPC - 90 degree, Jacket - All Dielectric, Breakout = 42", 250 Ft	R1011-0250F
307886	12 Fiber Count - 6 SC/APC, 6 LC/UPC - 90 degree, Jacket - All Dielectric, Breakout = 42", 500 Ft	R1011-0500F
307887	12 Fiber Count - 6 SC/APC, 6 LC/UPC - 90 degree, Jacket - All Dielectric, Breakout = 42", 750 Ft	R1011-0750F
307941	12 Fiber Count - 6 SC/APC, 6 LC/UPC - 90 degree, Jacket - All Dielectric, Breakout = 42", 1000 Ft	R1011-1000F
307876	12 Fiber Count - 6 SC/APC, 6 LC/UPC - 90 degree, Jacket - All Dielectric, Breakout = 42", 1250 Ft	R1011-1250F
307925	12 Fiber Count - 6 SC/APC, 6 LC/UPC - 90 degree, Jacket - All Dielectric, Breakout = 42", 1500 Ft	R1011-1500F
307942	12 Fiber Count - 6 SC/APC, 6 LC/UPC - 90 degree, Jacket - All Dielectric, Breakout = 42", 3000 Ft	R1011-3000F
309398	Node Cable, Armored, 24F (Binder 1: 8LCU+4 Dark & Binder 2: 8SCU+4 Dark), 1.2mm FO, 42" BO, 250ft	R1023-0250F
309399	90Node Cable, Armored, 24F (Binder 1: 8LCU+4 Dark & Binder 2: 8SCU+4 Dark), 1.2mm FO, 42" BO, 250ft	R1022-0250F

Note: Fan-out also available in 900 um and 2 mm and fiber count options ranges from 2 - 24F.