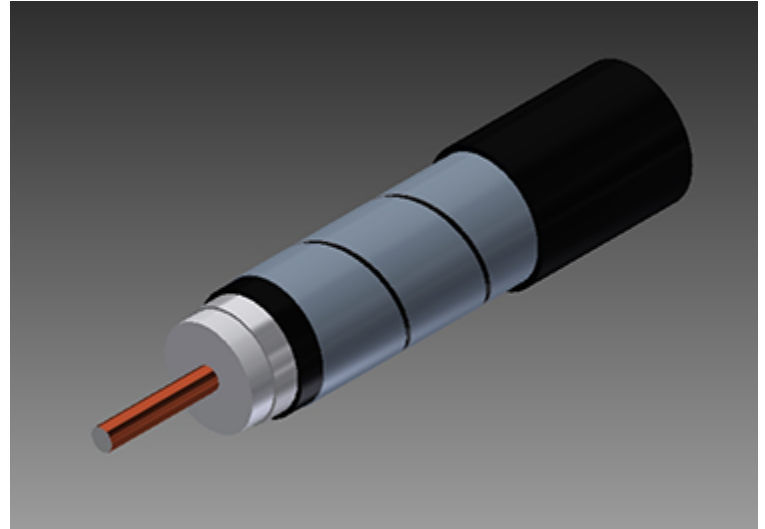




565 Series Coaxial Cable
Copper Clad Aluminum Conductor
Foamed Polyethylene Dielectric
Seamless Aluminum Tube Outer Conductor
Underground Floodant
Medium Density Polyethylene Jacket
Steel Armor Tape [Helically Applied]
Underground Floodant
Medium Density Polyethylene Jacket



Cable Ordering Information

Part Number	Description	NEC / CE Listing
750565JBA0BK00100001	TX10565JBA	

Characteristics

Material	Detail	inches	mm
Inner Conductor	Copper Clad Aluminum	0.129	3.28
Dielectric	Foamed Polyethylene	0.519	13.2
Outer Conductor	Seamless Aluminum Tube	0.565	14.4
Floodant	Underground	---	---
Jacket (inner)	Polyethylene, Outdoor, Black	0.635	16.1
Armor	Steel Tape, Helical	0.655	16.6
Floodant	Underground	---	---
Jacket (outer)	Polyethylene, Outdoor, Black	0.755	19.2
	---	---	---

Mechanical Specifications

Minimum Bend Radius, in. (mm)		11.0	(279)
Product Weight	(less reel)	218	(324)

Customers are reminded that they are SOLELY responsible for confirming that all products are properly installed and used in accordance with all applicable codes and regulations.

Document: tx10565jba_3.0ghz19.docx
Revision: 2019-09-04
Page: 1 of 2

Amphenol Broadband Solutions.
358 Hall Avenue
Wallingford, CT 06492
Toll Free +1-800-677-2288
Toll +1-434-432-1800
Fax +1-434-432-1821
www.timesfiber.com

uncontrolled copy

All Rights Reserved,
Specifications subject to change without notice



Electrical Specifications

Impedance, Ω	75 \pm 2	
Velocity of Propagation, %	89	
Capacitance, Nominal	15.2 pF/ft	49.9 pF/m
DC Resistance	Ω / kft	Ω / km
Inner Conductor	0.96	3.15
Outer Conductor	0.34	1.12
Loop	1.30	4.27

Structural Return Loss

MHz		dB
	5-1002	-30

Attenuation, Maximum @ 68 °F (20 °C)

Frequency, MHz	dB / 100 ft	dB / 100 m
5	0.14	0.46
55	0.47	1.54
85	0.59	1.94
211	0.93	3.05
250	1.03	3.38
270	1.07	3.51
300	1.13	3.71
330	1.19	3.90
350	1.23	4.04
400	1.32	4.33
450	1.40	4.59
500	1.49	4.89
550	1.56	5.12
600	1.64	5.38
750	1.85	6.07
870	2.01	6.59
1002	2.17	7.12
1100	2.29	7.51
1200	2.40	7.87
1218	2.41	7.91
1300	2.51	8.23
1400	2.62	8.60
1625	2.72	8.92
1600	2.92	9.58
1700	2.92	9.58
1794	3.01	9.88
1800	3.02	9.91
2000	3.20	10.50
2200	3.38	11.09
2400	3.56	11.68
2600	3.72	12.20
2800	3.89	12.76
3000	4.05	13.29

Customers are reminded that they are SOLELY responsible for confirming that all products are properly installed and used in accordance with all applicable codes and regulations.

Document: tx10565jba_3.0ghz19.docx
Revision: 2019-09-04
Page: 2 of 2

uncontrolled copy

All Rights Reserved,
Specifications subject to change without notice

Amphenol Broadband Solutions.
358 Hall Avenue
Wallingford, CT 06492
Toll Free +1-800-677-2288
Toll +1-434-432-1800
Fax +1-434-432-1821
www.timesfiber.com