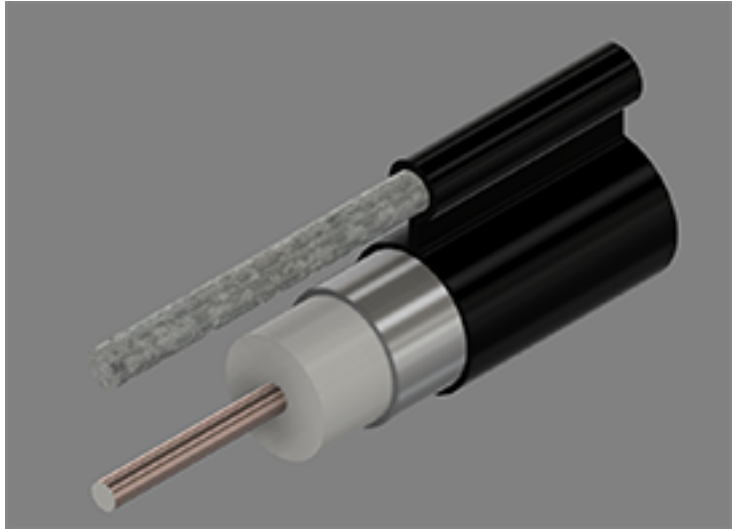




875 Series Coaxial Cable
Copper Clad Aluminum Conductor
Foamed Polyethylene Dielectric
Seamless Aluminum Tube Outer Conductor
0.250" Galvanized Steel Messenger



Medium Density Polyethylene Jacket Cable Ordering Information

Part Number	Description	NEC / CE Listing
750875MS00BK13000001	T10875MS / 250 MESS	

Characteristics

Material	Detail	inches	mm
Inner Conductor	Copper Clad Aluminum	0.194	4.93
Dielectric	Foamed Polyethylene	0.797	20.2
Outer Conductor	Seamless Aluminum Tube	0.875	22.2
Floodant	---	---	---
Jacket	Polyethylene, Outdoor, Black	0.945	24.0
Messenger	Galvanized Steel	0.250	6.35
Cable Width	---	1.440	36.6
	---	---	---
	---	---	---

Mechanical Specifications

Minimum Bend Radius, in. (mm)		7.0	(178)
Product Weight	(less reel)	405	(603)

Customers are reminded that they are SOLELY responsible for confirming that all products are properly installed and used in accordance with all applicable codes and regulations.

Document: t10875ms 250_3.0ghz19.docx
Revision: 2019-09-10
Page: 1 of 2

Amphenol Broadband Solutions.
358 Hall Avenue
Wallingford, CT 06492
Toll Free +1-800-677-2288
Toll +1-434-432-1800
Fax +1-434-432-1821
www.timesfiber.com

uncontrolled copy

All Rights Reserved,
Specifications subject to change without notice

Electrical Specifications

Impedance, Ω	75 \pm 2	
Velocity of Propagation, %	87	
Capacitance, Nominal	15.3 pF/ft	50.2 pF/m
DC Resistance	Ω / kft	Ω / km
Inner Conductor	0.42	1.38
Outer Conductor	0.13	0.43
Loop	0.55	1.81

Structural Return Loss

MHz		dB
	5-1002	-30

Attenuation, Maximum @ 68 °F (20 °C)

Frequency, MHz	dB / 100 ft	dB / 100 m
5	0.09	0.30
55	0.32	1.05
85	0.40	1.31
211	0.64	2.10
250	0.70	2.30
270	0.73	2.40
300	0.78	2.56
330	0.82	2.69
350	0.84	2.76
400	0.91	2.99
450	0.97	3.18
500	1.03	3.38
550	1.09	3.58
600	1.14	3.74
750	1.29	4.23
870	1.41	4.63
1002	1.53	5.02
1100	1.61	5.28
1200	1.69	5.54
1218	1.71	5.61
1300	1.76	5.77
1400	1.84	6.04
1625	1.93	6.33
1600	2.01	6.59
1700	2.05	6.73
1794	2.12	6.96
1800	2.13	6.99
2000	2.29	7.51
2200	2.43	7.97
2400	2.56	8.40
2600	2.69	8.83
2800	2.81	9.22
3000	2.92	9.58

Customers are reminded that they are SOLELY responsible for confirming that all products are properly installed and used in accordance with all applicable codes and regulations.

Document: t10875ms 250_3.0ghz19.docx
Revision: 2019-09-10
Page: 2 of 2

uncontrolled copy

All Rights Reserved,
Specifications subject to change without notice

Amphenol Broadband Solutions.
358 Hall Avenue
Wallingford, CT 06492
Toll Free +1-800-677-2288
Toll +1-434-432-1800
Fax +1-434-432-1821
www.timesfiber.com