

Amphenol's Node Cable Assemblies link optical transport cable to optical processing equipment. This connection is critical and requires an environmental seal between the cable and the node feed-thru.

Amphenol's node cables utilize a unique IP68 rated stainless steel feed-thru adapter, featuring an anti-twist coupling body.

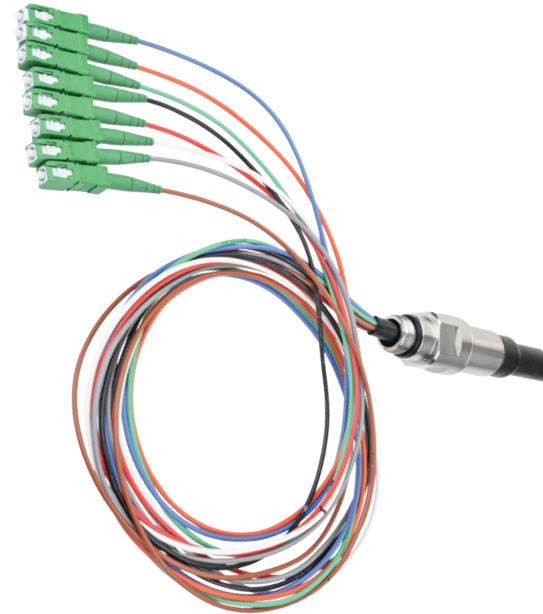
Our standard node assemblies use either a dielectric OSP cable or an armored OSP cable. Their multiple O-rings ensure a fully sealed cable and node.

Features:

- Available with SC, LC
- Available with 1.6 mm fan-out
- Fiber counts 12
- Factory terminated for high performance
- Stainless steel fitting
- Potted furaction for secure environmental protection
- No installation tools required
- Feed-thru body features and anti-twist design

Benefits:

- Multiple connector options available
- Multiple cable types available
- Multiple fiber counts available
- Reliable performance in field
- Added strength and environmental durability
- Reliable seal
- Quick and easy installation
- Allows tightening of node without twisting cable



Node Cable



Node & Assembly

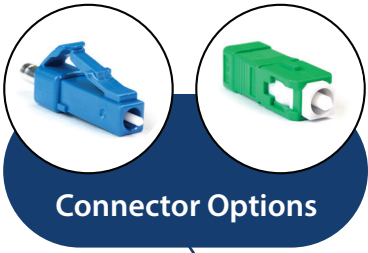
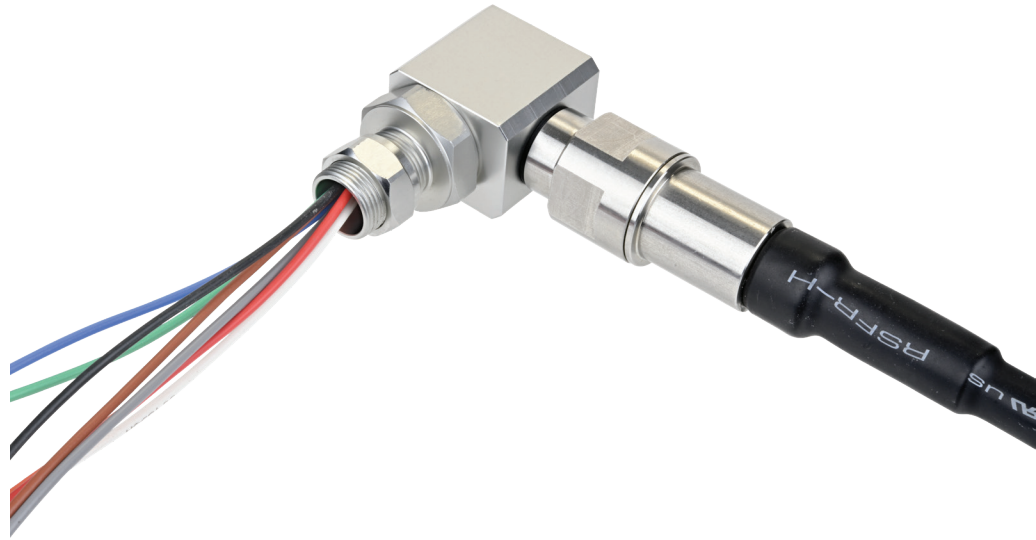
Industry Specifications

Weather Rating:	IP68
Operating Temperature:	-40° C to +85° C
Mating Cycles:	100 Minimum
Cable Retention:	445 N (100 lbs)
Strain Relief:	100 lbf
Accepted Cable Diameter:	4.8 mm - 7.0 mm
Submersible:	Up to 20 ft of water head
Threading:	Standard SCTE 5/8" - 24 UNEF

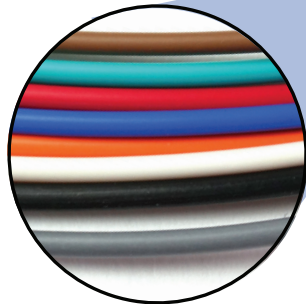
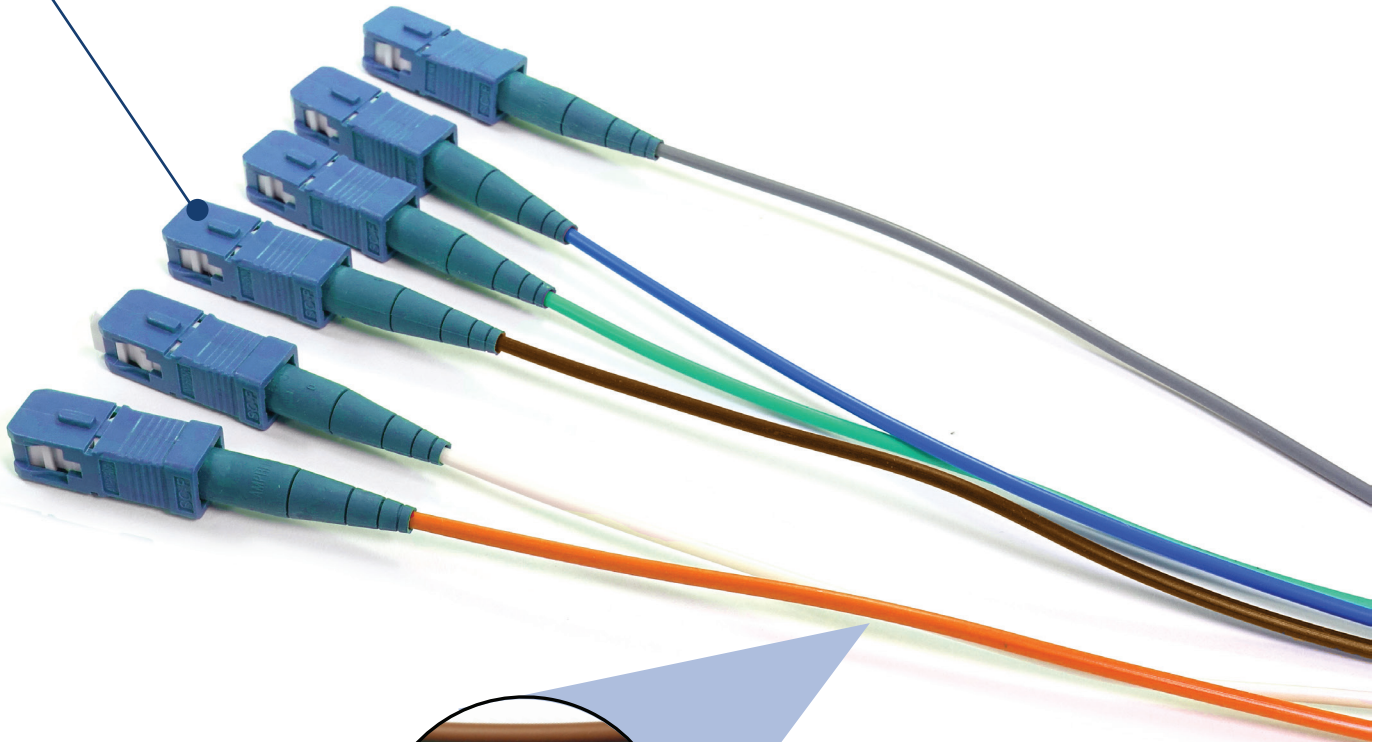
Key Features and Options:

Anti-Twist Feed-Thru Body

- 1. IP68 Environmental Seal
- 2. PG13.5 or 5/8-24 UNEF Threading
- 3. Color Coded Fanout



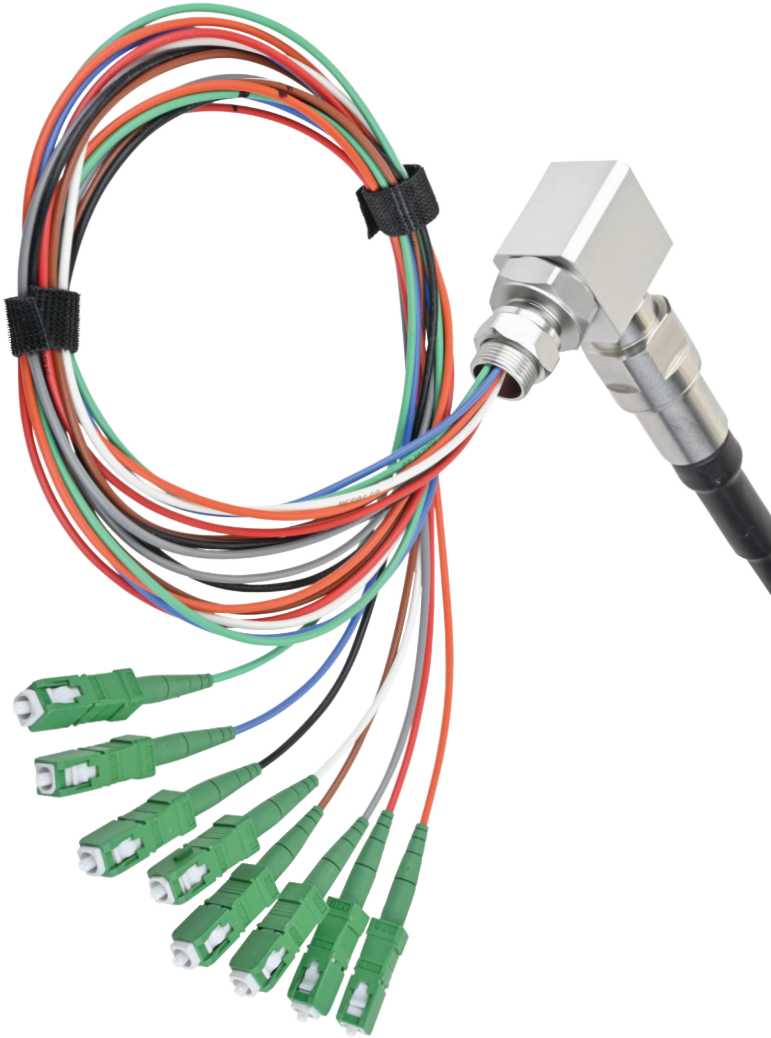
Connector Options



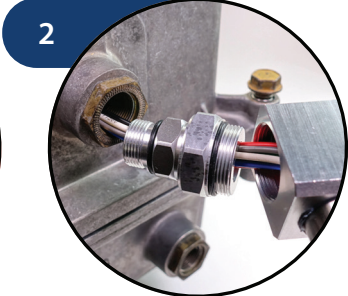
Step-By-Step Field Installation

Tools: Standrd 7/8" wrench

Warning: Do not exceed 80- 100 lbf in torque



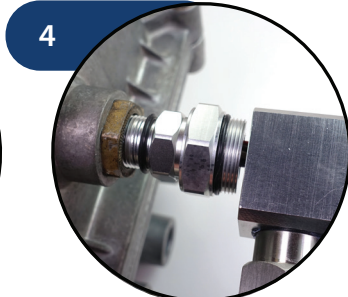
1 Feed connectors through node entry port



2 Feed cable into node to remove excess slack



3 Thread coupling fitting a full turn into node



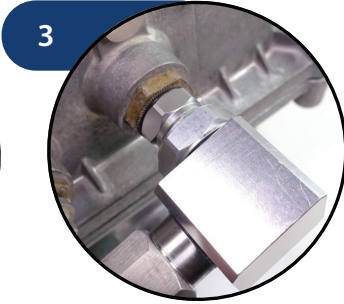
4 Align coupler to coupling fitting



1 Thread coupling fitting into node (due to left-handed threading, coupler will thread simultaneously)



2 Tighten coupling nut to secure in final position



3 Field installation complete

Optical Fiber OS2		Technical Specifications	
Parameter	Specification	Weather Rating:	IP68
Fiber Name:	Single-Mode (OS2)	Insertion Loss	
Fiber Category:	G.652.D / G.657.A1	Singlemode Ultra Polish (UPC)	≤ 0.20 dB typical
Wavelengths:	1310 nm / 1383 nm / 1500 nm	Singlemode Angle Polish (APC)	≤ 0.30 dB typical
Maximum Attenuation:	0.4 db/km / 0.4 dB/km / 0.3 db/km	Return Loss	
		Singlemode Ultra Polish (UPC)	-55 dB
		Singlemode Angle Polish (APC)	-65 dB

Ordering Information

ABS Part Number	Description
R1000-0100F	12 Fiber Count - 4 SC/APC, 4 LC/UPC, 4 non-terminated - straight, Jacket - Armored, Breakout = 42", 100 Ft
R1000-0250F	12 Fiber Count - 4 SC/APC, 4 LC/UPC, 4 non-terminated - straight, Jacket - Armored, Breakout = 42", 250 Ft
R1000-0500F	12 Fiber Count - 4 SC/APC, 4 LC/UPC, 4 non-terminated - straight, Jacket - Armored, Breakout = 42", 500 Ft
R1000-0750F	12 Fiber Count - 4 SC/APC, 4 LC/UPC, 4 non-terminated - straight, Jacket - Armored, Breakout = 42", 750 Ft
R1000-1000F	12 Fiber Count - 4 SC/APC, 4 LC/UPC, 4 non-terminated - straight, Jacket - Armored, Breakout = 42", 1000 Ft
R1000-1250F	12 Fiber Count - 4 SC/APC, 4 LC/UPC, 4 non-terminated - straight, Jacket - Armored, Breakout = 42", 1250 Ft
R1000-1500F	12 Fiber Count - 4 SC/APC, 4 LC/UPC, 4 non-terminated - straight, Jacket - Armored, Breakout = 42", 1500 Ft
R1000-3000F	12 Fiber Count - 4 SC/APC, 4 LC/UPC, 4 non-terminated - straight, Jacket - Armored, Breakout = 42", 3000 Ft
R1001-0100F	12 Fiber Count - 4 SC/APC, 4 LC/UPC, 4 non-terminated - 90 degree, Jacket - Armored, Breakout = 42", 100 Ft
R1001-0250F	12 Fiber Count - 4 SC/APC, 4 LC/UPC, 4 non-terminated - 90 degree, Jacket - Armored, Breakout = 42", 250 Ft
R1001-0500F	12 Fiber Count - 4 SC/APC, 4 LC/UPC, 4 non-terminated - 90 degree, Jacket - Armored, Breakout = 42", 500 Ft
R1001-0750F	12 Fiber Count - 4 SC/APC, 4 LC/UPC, 4 non-terminated - 90 degree, Jacket - Armored, Breakout = 42", 750 Ft
R1001-1000F	12 Fiber Count - 4 SC/APC, 4 LC/UPC, 4 non-terminated - 90 degree, Jacket - Armored, Breakout = 42", 1000 Ft
R1001-1250F	12 Fiber Count - 4 SC/APC, 4 LC/UPC, 4 non-terminated - 90 degree, Jacket - Armored, Breakout = 42", 1250 Ft
R1001-1500F	12 Fiber Count - 4 SC/APC, 4 LC/UPC, 4 non-terminated - 90 degree, Jacket - Armored, Breakout = 42", 1500 Ft
R1001-3000F	12 Fiber Count - 4 SC/APC, 4 LC/UPC, 4 non-terminated - 90 degree, Jacket - Armored, Breakout = 42", 3000 Ft
R1002-0100F	12 Fiber Count - 4 SC/APC, 4 LC/UPC, 4 non-terminated - straight, Jacket - All Dielectric, Breakout = 42", 100 Ft
R1002-0250F	12 Fiber Count - 4 SC/APC, 4 LC/UPC, 4 non-terminated - straight, Jacket - All Dielectric, Breakout = 42", 250 Ft
R1002-0500F	12 Fiber Count - 4 SC/APC, 4 LC/UPC, 4 non-terminated - straight, Jacket - All Dielectric, Breakout = 42", 500 Ft
R1002-0750F	12 Fiber Count - 4 SC/APC, 4 LC/UPC, 4 non-terminated - straight, Jacket - All Dielectric, Breakout = 42", 750 Ft
R1002-1000F	12 Fiber Count - 4 SC/APC, 4 LC/UPC, 4 non-terminated - straight, Jacket - All Dielectric, Breakout = 42", 1000 Ft
R1002-1250F	12 Fiber Count - 4 SC/APC, 4 LC/UPC, 4 non-terminated - straight, Jacket - All Dielectric, Breakout = 42", 1250 Ft
R1002-1500F	12 Fiber Count - 4 SC/APC, 4 LC/UPC, 4 non-terminated - straight, Jacket - All Dielectric, Breakout = 42", 1500 Ft
R1002-3000F	12 Fiber Count - 4 SC/APC, 4 LC/UPC, 4 non-terminated - straight, Jacket - All Dielectric, Breakout = 42", 3000 Ft
R1003-0100F	12 Fiber Count - 4 SC/APC, 4 LC/UPC, 4 non-terminated - 90 degree, Jacket - All Dielectric, Breakout = 42", 100 Ft
R1003-0250F	12 Fiber Count - 4 SC/APC, 4 LC/UPC, 4 non-terminated - 90 degree, Jacket - All Dielectric, Breakout = 42", 250 Ft
R1003-0500F	12 Fiber Count - 4 SC/APC, 4 LC/UPC, 4 non-terminated - 90 degree, Jacket - All Dielectric, Breakout = 42", 500 Ft
R1003-0750F	12 Fiber Count - 4 SC/APC, 4 LC/UPC, 4 non-terminated - 90 degree, Jacket - All Dielectric, Breakout = 42", 750 Ft
R1003-1000F	12 Fiber Count - 4 SC/APC, 4 LC/UPC, 4 non-terminated - 90 degree, Jacket - All Dielectric, Breakout = 42", 1000 Ft
R1003-1250F	12 Fiber Count - 4 SC/APC, 4 LC/UPC, 4 non-terminated - 90 degree, Jacket - All Dielectric, Breakout = 42", 1250 Ft
R1003-1500F	12 Fiber Count - 4 SC/APC, 4 LC/UPC, 4 non-terminated - 90 degree, Jacket - All Dielectric, Breakout = 42", 1500 Ft
R1003-3000F	12 Fiber Count - 4 SC/APC, 4 LC/UPC, 4 non-terminated - 90 degree, Jacket - All Dielectric, Breakout = 42", 3000 Ft

Ordering Information cont'd

ABS Part Number	Description
R1004-0100F	12 Fiber Count - 8 LC/UPC , 4 non-terminated - straight, Jacket - Armored, Breakout = 42", 100 Ft
R1004-0250F	12 Fiber Count - 8 LC/UPC , 4 non-terminated - straight, Jacket - Armored, Breakout = 42", 250 Ft
R1004-0500F	12 Fiber Count - 8 LC/UPC , 4 non-terminated - straight, Jacket - Armored, Breakout = 42", 500 Ft
R1004-0750F	12 Fiber Count - 8 LC/UPC , 4 non-terminated - straight, Jacket - Armored, Breakout = 42", 750 Ft
R1004-1000F	12 Fiber Count - 8 LC/UPC , 4 non-terminated - straight, Jacket - Armored, Breakout = 42", 1000 Ft
R1004-1250F	12 Fiber Count - 8 LC/UPC , 4 non-terminated - straight, Jacket - Armored, Breakout = 42", 1250 Ft
R1004-1500F	12 Fiber Count - 8 LC/UPC , 4 non-terminated - straight, Jacket - Armored, Breakout = 42", 1500 Ft
R1004-3000F	12 Fiber Count - 8 LC/UPC , 4 non-terminated - straight, Jacket - Armored, Breakout = 42", 3000 Ft
R1005-0100F	12 Fiber Count - 8 LC/UPC , 4 non-terminated - 90 degree, Jacket - Armored, Breakout = 42", 100 Ft
R1005-0250F	12 Fiber Count - 8 LC/UPC , 4 non-terminated - 90 degree, Jacket - Armored, Breakout = 42", 250 Ft
R1005-0500F	12 Fiber Count - 8 LC/UPC , 4 non-terminated - 90 degree, Jacket - Armored, Breakout = 42", 500 Ft
R1005-0750F	12 Fiber Count - 8 LC/UPC , 4 non-terminated - 90 degree, Jacket - Armored, Breakout = 42", 750 Ft
R1005-1000F	12 Fiber Count - 8 LC/UPC , 4 non-terminated - 90 degree, Jacket - Armored, Breakout = 42", 1000 Ft
R1005-1250F	12 Fiber Count - 8 LC/UPC , 4 non-terminated - 90 degree, Jacket - Armored, Breakout = 42", 1250 Ft
R1005-1500F	12 Fiber Count - 8 LC/UPC , 4 non-terminated - 90 degree, Jacket - Armored, Breakout = 42", 1500 Ft
R1005-3000F	12 Fiber Count - 8 LC/UPC , 4 non-terminated - 90 degree, Jacket - Armored, Breakout = 42", 3000 Ft
R1006-0100F	12 Fiber Count - 8 LC/UPC , 4 non-terminated - straight, Jacket - All Dielectric, Breakout = 42", 100 Ft
R1006-0250F	12 Fiber Count - 8 LC/UPC , 4 non-terminated - straight, Jacket - All Dielectric, Breakout = 42", 250 Ft
R1006-0500F	12 Fiber Count - 8 LC/UPC , 4 non-terminated - straight, Jacket - All Dielectric, Breakout = 42", 500 Ft
R1006-0750F	12 Fiber Count - 8 LC/UPC , 4 non-terminated - straight, Jacket - All Dielectric, Breakout = 42", 750 Ft
R1006-1000F	12 Fiber Count - 8 LC/UPC , 4 non-terminated - straight, Jacket - All Dielectric, Breakout = 42", 1000 Ft
R1006-1250F	12 Fiber Count - 8 LC/UPC , 4 non-terminated - straight, Jacket - All Dielectric, Breakout = 42", 1250 Ft
R1006-1500F	12 Fiber Count - 8 LC/UPC , 4 non-terminated - straight, Jacket - All Dielectric, Breakout = 42", 1500 Ft
R1006-3000F	12 Fiber Count - 8 LC/UPC , 4 non-terminated - straight, Jacket - All Dielectric, Breakout = 42", 3000 Ft
R1007-0100F	12 Fiber Count - 8 LC/UPC , 4 non-terminated - 90 degree, Jacket - All Dielectric, Breakout = 42", 100 Ft
R1007-0250F	12 Fiber Count - 8 LC/UPC , 4 non-terminated - 90 degree, Jacket - All Dielectric, Breakout = 42", 250 Ft
R1007-0500F	12 Fiber Count - 8 LC/UPC , 4 non-terminated - 90 degree, Jacket - All Dielectric, Breakout = 42", 500 Ft
R1007-0750F	12 Fiber Count - 8 LC/UPC , 4 non-terminated - 90 degree, Jacket - All Dielectric, Breakout = 42", 750 Ft
R1007-1000F	12 Fiber Count - 8 LC/UPC , 4 non-terminated - 90 degree, Jacket - All Dielectric, Breakout = 42", 1000 Ft
R1007-1250F	12 Fiber Count - 8 LC/UPC , 4 non-terminated - 90 degree, Jacket - All Dielectric, Breakout = 42", 1250 Ft
R1007-1500F	12 Fiber Count - 8 LC/UPC , 4 non-terminated - 90 degree, Jacket - All Dielectric, Breakout = 42", 1500 Ft
R1007-3000F	12 Fiber Count - 8 LC/UPC , 4 non-terminated - 90 degree, Jacket - All Dielectric, Breakout = 42", 3000 Ft
R1008-0100F	12 Fiber Count - 6 SC/APC, 6 LC/UPC - straight, Jacket - Armored, Breakout = 42", 100 Ft
R1008-0250F	12 Fiber Count - 6 SC/APC, 6 LC/UPC - straight, Jacket - Armored, Breakout = 42", 250 Ft
R1008-0500F	12 Fiber Count - 6 SC/APC, 6 LC/UPC - straight, Jacket - Armored, Breakout = 42", 500 Ft
R1008-0750F	12 Fiber Count - 6 SC/APC, 6 LC/UPC - straight, Jacket - Armored, Breakout = 42", 750 Ft
R1008-1000F	12 Fiber Count - 6 SC/APC, 6 LC/UPC - straight, Jacket - Armored, Breakout = 42", 1000 Ft
R1008-1250F	12 Fiber Count - 6 SC/APC, 6 LC/UPC - straight, Jacket - Armored, Breakout = 42", 1250 Ft
R1008-1500F	12 Fiber Count - 6 SC/APC, 6 LC/UPC - straight, Jacket - Armored, Breakout = 42", 1500 Ft
R1008-3000F	12 Fiber Count - 6 SC/APC, 6 LC/UPC - straight, Jacket - Armored, Breakout = 42", 3000 Ft
R1009-0100F	12 Fiber Count - 6 SC/APC, 6 LC/UPC - 90 degree, Jacket - Armored, Breakout = 42", 100 Ft
R1009-0250F	12 Fiber Count - 6 SC/APC, 6 LC/UPC - 90 degree, Jacket - Armored, Breakout = 42", 250 Ft

Ordering Information cont'd

ABS Part Number	Description
R1009-0500F	12 Fiber Count - 6 SC/APC, 6 LC/UPC - 90 degree, Jacket - Armored, Breakout = 42", 500 Ft
R1009-0750F	12 Fiber Count - 6 SC/APC, 6 LC/UPC - 90 degree, Jacket - Armored, Breakout = 42", 750 Ft
R1009-1000F	12 Fiber Count - 6 SC/APC, 6 LC/UPC - 90 degree, Jacket - Armored, Breakout = 42", 1000 Ft
R1009-1250F	12 Fiber Count - 6 SC/APC, 6 LC/UPC - 90 degree, Jacket - Armored, Breakout = 42", 1250 Ft
R1009-1500F	12 Fiber Count - 6 SC/APC, 6 LC/UPC - 90 degree, Jacket - Armored, Breakout = 42", 1500 Ft
R1009-3000F	12 Fiber Count - 6 SC/APC, 6 LC/UPC - 90 degree, Jacket - Armored, Breakout = 42", 3000 Ft
R1010-0100F	12 Fiber Count - 6 SC/APC, 6 LC/UPC - straight, Jacket - All Dielectric, Breakout = 42", 100 Ft
R1010-0250F	12 Fiber Count - 6 SC/APC, 6 LC/UPC - straight, Jacket - All Dielectric, Breakout = 42", 250 Ft
R1010-0500F	12 Fiber Count - 6 SC/APC, 6 LC/UPC - straight, Jacket - All Dielectric, Breakout = 42", 500 Ft
R1010-0750F	12 Fiber Count - 6 SC/APC, 6 LC/UPC - straight, Jacket - All Dielectric, Breakout = 42", 750 Ft
R1010-1000F	12 Fiber Count - 6 SC/APC, 6 LC/UPC - straight, Jacket - All Dielectric, Breakout = 42", 1000 Ft
R1010-1250F	12 Fiber Count - 6 SC/APC, 6 LC/UPC - straight, Jacket - All Dielectric, Breakout = 42", 1250 Ft
R1010-1500F	12 Fiber Count - 6 SC/APC, 6 LC/UPC - straight, Jacket - All Dielectric, Breakout = 42", 1500 Ft
R1010-3000F	12 Fiber Count - 6 SC/APC, 6 LC/UPC - straight, Jacket - All Dielectric, Breakout = 42", 3000 Ft
R1011-0100F	12 Fiber Count - 6 SC/APC, 6 LC/UPC - 90 degree, Jacket - All Dielectric, Breakout = 42", 100 Ft
R1011-0250F	12 Fiber Count - 6 SC/APC, 6 LC/UPC - 90 degree, Jacket - All Dielectric, Breakout = 42", 250 Ft
R1011-0500F	12 Fiber Count - 6 SC/APC, 6 LC/UPC - 90 degree, Jacket - All Dielectric, Breakout = 42", 500 Ft
R1011-0750F	12 Fiber Count - 6 SC/APC, 6 LC/UPC - 90 degree, Jacket - All Dielectric, Breakout = 42", 750 Ft
R1011-1000F	12 Fiber Count - 6 SC/APC, 6 LC/UPC - 90 degree, Jacket - All Dielectric, Breakout = 42", 1000 Ft
R1011-1250F	12 Fiber Count - 6 SC/APC, 6 LC/UPC - 90 degree, Jacket - All Dielectric, Breakout = 42", 1250 Ft
R1011-1500F	12 Fiber Count - 6 SC/APC, 6 LC/UPC - 90 degree, Jacket - All Dielectric, Breakout = 42", 1500 Ft
R1011-3000F	12 Fiber Count - 6 SC/APC, 6 LC/UPC - 90 degree, Jacket - All Dielectric, Breakout = 42", 3000 Ft

Note: Fan-out also available in 900 um and 2 mm and fiber count options ranges from 2 - 24F.