

Amphenol's TRUE® HV series of Tier Rated Below Grade Enclosures offer unparalleled protection for fiber optic and utility networks. Crafted of lightweight, high-strength materials using a Reinforced Thermoplastic Composite process. The rugged construction provides exceptional durability and strength at one-third of the weight of traditional polymer concrete units. TRUE® HV is Omni-Edge™ Tier Rating capable (meet load requirements anywhere on the cover or top edge) as opposed to HDPE equivalents that utilize metallic bracing to create a "load path" where product testing is performed. TRUE® HV nests for efficient shipping and warehousing and offers available options for Nameplates, EMS markers, Grounding and Cable Management.



Features:

- Designed to meet or exceed ANSI/SCTE-77 Tier 15 ratings and Tier 22 ratings for various incidental traffic applications
- Superior strength and durability
- Roughly one-third the weight of Polymer Concrete, making them easier to handle and install
- Innovative flared design allows for efficient stacking during shipment and warehousing
- Omni-edge tier rated load capable
- Nesting & optimized palletizing enables 50% to 100% more units per truckload

Applications:

- Fiber optic, copper and coaxial slack cable coiling and storage
- Fiber optic splice closure storage
- Meter boxes / junction boxes
- Irrigation system and other waterway control valves
- Traffic and railway signal controls
- Ground rods

Markets Served:

- Telecom / FTTX
- Utility
- Wireless
- Broadband Cable

OmniEdge™ is a registered trademark of Prym Consumer USA Inc.

121212

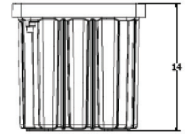
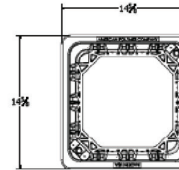
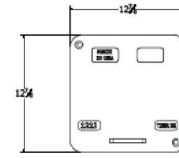


Appx. Dimensions:
12"W x 12"L x 12"D

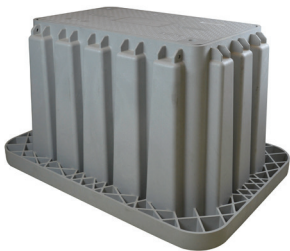
Description: Tier 15/22, 12x12x12 Reinforced
Thermoplastic Vault w Cover and 3/8" Hex Auger Bolts

Cover Weight:
7 lbs
Base Weight:
11 lbs
Unit Weight:
18 lbs

Pallet Quantity:
24
Full Pallet Weight:
462 lbs
Truckload Quantity:
1008



173024

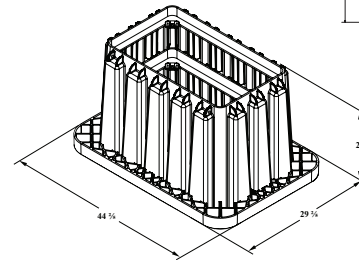
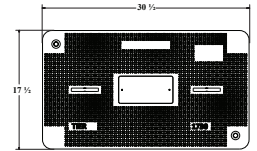


Appx. Dimensions:
17"W x 30"L x 24"D

Description: Tier 15/22, 17x30x24 Reinforced
Thermoplastic Vault w Cover and 3/8" Hex Auger Bolts

Cover Weight:
25 lbs
Base Weight:
68 lbs
Unit Weight:
93 lbs

Pallet Quantity:
7
Full Pallet Weight:
681 lbs
Truckload Quantity:
294



243624

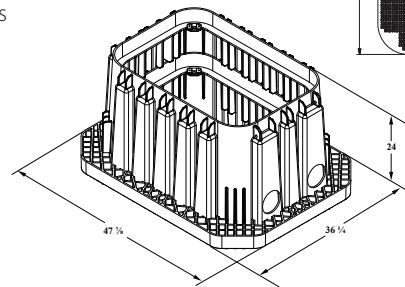
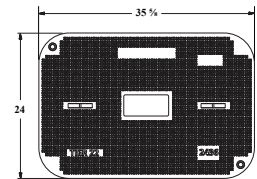


Appx. Dimensions:
24"W x 36"L x 24"D

Description: Tier 15/22, 24x36x36 Reinforced
Thermoplastic Vault w Cover and 3/8" Hex Auger Bolts

Cover Weight:
44 lbs
Base Weight:
85 lbs
Unit Weight:
130 lbs

Pallet Quantity:
7
Full Pallet Weight:
940 lbs
Truckload Quantity:
224



304836

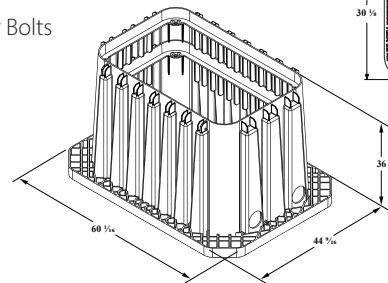
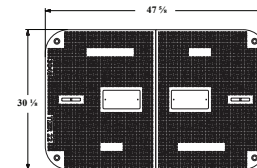


Appx. Dimensions:
30"W x 48"L x 36"D

Description: Tier 15/22, 30x48x36 Reinforced
Thermoplastic Vault w Split Cover and 3/8" Hex Auger Bolts

Cover Weight:
96 lbs
Base Weight:
115 lbs
Unit Weight:
215 lbs

Pallet Quantity:
5
Full Pallet Weight:
1,105 lbs
Truckload Quantity:
90



Ordering Information:

Part Number	Description	Skid Qty
V121212AEETHXXX	12"x12"x12" Tier 15 rated reinforced thermoplastic vault with cover and 3/8" hex auger bolts, Gray	24
W121212AEETHXXX	12"x12"x12" Tier 22 rated reinforced thermoplastic vault with cover and 3/8" hex auger bolts, Gray	24
V173024AEETHXXX	17"x30"x24" Tier 15 rated reinforced thermoplastic vault with cover and 3/8" hex auger bolts, Gray	7
W173024AEETHXXX	17"x30"x24" Tier 22 rated reinforced thermoplastic vault with cover and 3/8" hex auger bolts, Gray	7
V243624AEETHXXX	24"x36"x24" Tier 15 rated reinforced thermoplastic vault with cover and 3/8" hex auger bolts, Gray	7
W243624AEETHXXX	24"x36"x24" Tier 22 rated reinforced thermoplastic vault with cover and 3/8" hex auger bolts, Gray	7
V304836SEETHXXX	30"x48"x36" Tier 15 rated reinforced thermoplastic vault w/ 2pc cover & 3/8" hex auger bolts, Gray	5
W304836SEETHXXX	30"x48"x36" Tier 22 rated reinforced thermoplastic vault with 2pc cover & 3/8" hex auger bolts, Gray	5
TRUE-LFTHOOK	Lift Hook for TRUE® HV Enclosure, 31" length, steel construction	

