



Amphenol Broadband Solutions has released a third-generation fiber demarcation wall-mount enclosure that provides improved access and versatility for a variety of indoor applications.

An integrated access door on the customer side of the enclosure provides a generous opening for a cleaning tool to reach the optical connectors resulting in a more craft-friendly design. The access door can be opened by hand without the use of tools.

Splice trays are configurable to accommodate splices and discrete passive components, such as splitters and WDM filters, as well as high density optical modules. The center demarcation panel enables HiD4 high density optical passive cassettes or Mini-LGX cassettes to be installed along with traditional connector bulkhead panels.

The FDE enclosure will accommodate both SC and LC style connectors in LGX® compatible bulkhead panels and provides an ideal environment for splicing and patching when building, maintaining and storing vital network connection points.



Fiber Demarcation
Enhanced Access Box (FDE)



FDE with MPO

Features:

- Access door on customer side allows easy cleaning tool access to optical ports
- Bulkhead accepts up to 24 SC or 48 LC adapters as well as passive cassettes
- Fanouts terminated with an MPO connector can be installed on the splice tray
- Layered fiber routing separates cable tubes from buffered fibers
- Two carrier cable entry ports with rubber grommets
- Powder coated aluminum housing
- Two customer cable exit ports with rubber grommets top and bottom for patchcord or multi-fiber cable exit
- Grommet allows pigtailed to be placed in the box after termination, one-at-a-time or as a group
- Grounding and ground feed-through components
- Security bolts and provisions for padlock hasps provided for both doors
- Cable sheath clamps for carrier cables
- Easy wall mounting; template and hardware included

LGX® is a registered trademark of OFS FITEL, LLC

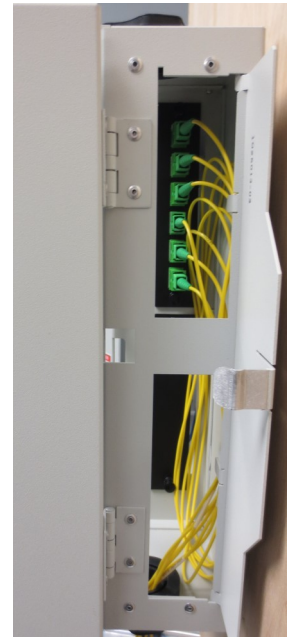
| Specifications | |
|--|--|
| Adapter Capacity, SC Simplex | Up to 24 (Two 12 position bulkhead panels) |
| Adapter Capacity, LC Duplex | Up to 48 (Two 12 position duplex bulkhead panels) |
| Dimensions | 13.0"W x 11.9"H x 3.8"D |
| Splice Tray Capacity | 2 |
| Splice Capacity | 24 Single Fusion per Splice Tray 8 Mass Fusion per Splice Tray* |
| Material | Aluminum Powder coated - Light Grey |
| (*) Splice holder capacity: It is not recommended to use small "A" sized tray for 12F ribbon storage or crossover routing. | |



Optical Port Cleaning Tool - use with FDE



Inside



Outside

Access Door View

Ordering Information:

| CIFA | Description | Part Number |
|-------|---|---------------|
| 89929 | Fiber Demarcation Box Gen 2 Enhanced with Integrated Connector Cleaning Access Door, (2) Strength Member Cable Brackets, (1) Ground Feed-Thru, (1) #6AWG Ground Strap, (1) Mini-B Bond, (6) SC/APC Adapters and 900um Color Coded Pigtails, (1) Splice Tray with (2) SF Single Fiber Splice Modules | ASBFDE1025434 |
| 89930 | Fiber Demarcation Box Gen 2 Enhanced with Integrated Connector Cleaning Access Door, (2) Strength Member Cable Brackets, (1) Ground Feed-Thru, (1) #6AWG Ground Strap, (1) Mini-B Bond, (6) SC/APC Adapters and 900um Color Coded Pigtails, (2) Splice Trays, (1) SF Single Fiber Splice Module Per Tray. Trays, Pigtails, Adapters are Factory Installed. | ASBFDE1025471 |
| 89775 | Fiber Demarcation Box Gen 2 Enhanced with Integrated Connector Cleaning Access Door, (2) Single Cable Retention Brackets, (2) Fanouts with 12 fiber MPO-male to 12 SC/APC connectors, (2) 12 fiber SC/APC Adapter Panels, (2) MPO Adapters Opposed Key, (2) Splice Trays. Fanouts, trays, and adapters are factory installed. Configuration: ASBFDE-BSR-NN-S7C2-CE-L1 | ASBFDE1025465 |

Ordering Information - Accessories:

| CIFA | Description | Part Number |
|-------|---|---------------|
| 32406 | Accessory Kit - Ground Lug w/ hole, 6" Ground Wire, Mini B-bond | ASBACC1021223 |
| 88489 | FDE Accessory Kit with (24) SC/APC Adapters, (18) 900um Color Coded Pigtails with SC/APC connectors, (1) Pigtail Plate, and (2) SF Splice Modules | ASBACC1024536 |
| 89923 | Pigtail Kit with (12) SC/APC Adapters and 900um Color Coded Pigtails and (1) Pigtail Plate | ASBACC1024222 |
| 89924 | Pigtail Kit with (6) SC/APC Adapters and 900um Color Coded Pigtails marked 7-12 (red to aqua) and (1) Pigtail Plate | ASBACC1024223 |
| 90915 | FDE/FD3 Door Padlock Hasp Kit (provider side) | ASBACC1023916 |
| 90916 | FDE/FD3 Door Camlock Kit includes camlock and two keys (customer side or provider side) | ASBACC1023919 |
| - | Splice Sleeve Pk, 60mm Length (100/pk) | ASBACC1020236 |
| - | Splice Sleeve Pk 40mm length (100/pk) | ASBACC1020237 |
| - | Ground Kit: Ground Lug with Solid Shaft, Ground Wire, Mini B-Bond | ASBACC1021890 |
| - | Rubber Pigtail Grommet - Short (4/kit) | ASBACC1021894 |
| - | Splice Module Single Fusion (2/kit) | ASBACC1023915 |
| - | Splice Module Mass Fusion (2/kit) | ASBACC1022960 |
| - | Accessory Kit, Cable Strength Member Bracket | ASBACC1021889 |
| - | Dual Cable Retention Bracket Kit | ASBACC1023188 |

Ordering Information - Accessories:

| CIFA | Description | Part Number |
|------|---|---------------|
| - | Pigtail Plate with Mounting Hardware | ASBACC1023922 |
| - | Cable Port - Conduit Seal | ASBACC1023923 |
| - | Cable Port and Cable Gland | ASBACC1023924 |
| - | Cable Port - Blank | ASBACC1023925 |
| - | SC/APC Pigtails 1-6 Accessory | ASBACC1023927 |
| - | SC/APC Pigtails 7-12 Accessory | ASBACC1023926 |
| - | SC/UPC Pigtails 1-6 Accessory | ASBACC1023936 |
| - | SC/UPC Pigtails 7-12 Accessory | ASBACC1023935 |
| - | LC/UPC Pigtails two sets 1-12 Accessory | ASBACC1023930 |
| - | LC/APC Pigtails two sets 1-12 Accessory | ASBACC1023931 |
| - | LC/UPC Pigtails 1-12 Accessory | ASBACC1023928 |
| - | LC/APC Pigtails 1-12 Accessory | ASBACC1023929 |
| - | SC/UPC Simplex SM 6PK Panel Assembly | ASBMMB1021482 |
| - | SC/APC Simplex SM 6PK Panel Assembly | ASBMMB1021483 |
| - | LC/UPC Duplex SM 6PK Panel Assembly | ASBMMB1021485 |
| - | LC/APC Duplex SM 6PK Panel Assembly | ASBMMB1021486 |
| - | SC/UPC Simplex SM 12PK Panel Assembly | ASBMMB1021488 |
| - | SC/APC Simplex SM 12PK Panel Assembly | ASBMMB1021489 |
| - | LC/UPC Duplex SM 12PK Panel Assembly | ASBMMB1023933 |
| - | LC/APC Duplex SM 12PK Panel Assembly | ASBMMB1023934 |
| - | Blank, Panel Assembly, Narrow Width | ASBMMB1024709 |