

Pedestal Housing for Next Generation CATV / Broadband Network Equipment

Next generation CATV network upgrades, including Remote PHY (R-PHY), MAC-PHY, Node + 0, Node + N, etc., are placing increasing thermal and space demands on outside plant pedestal housings. New R-PHY optical nodes are being engineered to dissipate 160 Watts of power; significantly greater than prior generations of pedestal housings were designed to accommodate. Pedestals that cannot accommodate 160W can result in network outages or shorter equipment lifespans due to over-heated equipment.



The Amphenol Z24 pedestal housing was engineered specifically to meet the demands of next generation CATV network architectures and equipment. It is built to withstand the harsh elements typically found in outside plant deployments. Leveraging our expertise in outside plant enclosure engineering, thermal analysis, design and testing, the Z24 is capable of supporting R-PHY compliant equipment across all regions in the USA.



Product Features

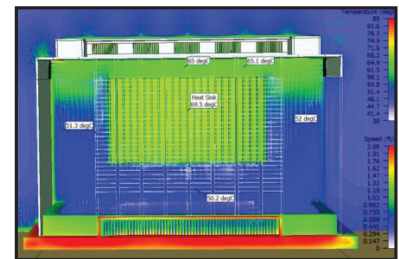
- Molded of high-density polyethylene (HDPE) with ultraviolet U/V inhibitors to provide impact resistance, color stability and long-life
- High-density engineered venting providing robust heat dissipation for high-output R-PHY nodes
- Insect resistant openings to prevent wasp and bee intrusion to protect technicians accessing the enclosure
- Self-latching dome locking system reduces unlocked pedestals and unwanted access
- Extended depth base accommodates storage of additional fiber splice closures as well as installations on sloped grades
- Self-supporting base requires no additional mounting stake
- Molded-in ground line for consistent installations
- Corrosion resistant aluminum or stainless steel brackets and hardware for long service life
- Multiple bracket options for various node deployment options

Specifications

Color	Light Green - Standard (option #2) Dark Green (option #4)	
Lock	HEX (option SS07) 	P-Key (option SCCP) 
Cover Dimensions	38"X24"X26"H	
Overall Dimensions	42"X32"X60"H	

Thermal Analysis

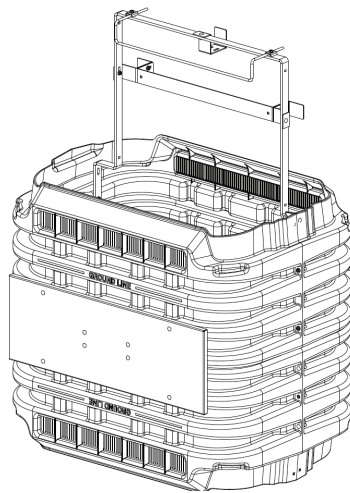
Our Thermal Management Experts are available to consult with you on your specific application's heat dissipation needs, including thermal modeling of equipment as would be housed. Please contact your account representative for details.



Ordering Information

ABS Part Number	Description
Z24SS07-20007BK	PEDESTAL, 24x36, EXTENDED DEPTH BASE, HIGH HEAT, NODE BRACKET WITH FIBER SLACK STORAGE, 7/16" HEX LOCK, LIGHT GREEN
Z24SS07-40007BK	PEDESTAL, 24x36, EXTENDED DEPTH BASE, HIGH HEAT, NODE BRACKET WITH FIBER SLACK STORAGE, 7/16" HEX LOCK, DARK GREEN, MOQ 250 PIECES
Z24SCCP-20007BK	PEDESTAL, 24x36, EXTENDED DEPTH BASE, HIGH HEAT, NODE BRACKET WITH FIBER SLACK STORAGE, P-KEY LOCK, LIGHT GREEN
Z24SCCP-40007BK	PEDESTAL, 24x36, EXTENDED DEPTH BASE, HIGH HEAT, NODE BRACKET WITH FIBER SLACK STORAGE, P-KEY LOCK, DARK GREEN, MOQ 250 PIECES

Bracket



**Low-Profile Node Bracket
with Fiber Slack Management**
(Option 007)

Housing Dimensions

