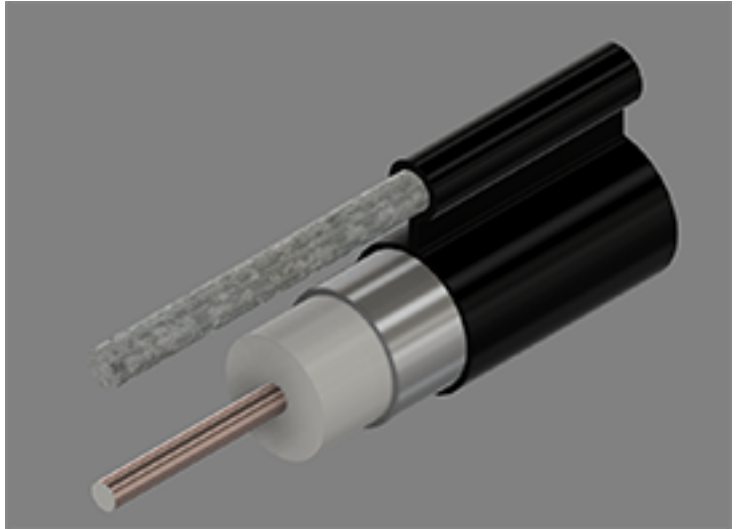


715 Series Coaxial Cable
 Copper Clad Aluminum Conductor
 Foamed Polyethylene Dielectric
 Seamless Aluminum Tube Outer Conductor
 Medium Density Polyethylene Jacket
 0.188" Galvanized Steel Messenger



Cable Ordering Information

Part Number	Description	NEC / CE Listing
750715MS00BK11000001	TX10715MS / 188 MESS	

Characteristics

Material	Detail	inches	mm
Inner Conductor	Copper Clad Aluminum	0.166	4.22
Dielectric	Foamed Polyethylene	0.686	17.4
Outer Conductor	Seamless Aluminum Tube	0.715	18.2
Floodant	---	---	---
Jacket	Polyethylene, Outdoor, Black	0.785	19.9
Messenger	Galvanized Steel	0.188	4.78
Cable Width	---	1.180	30.0
	---	---	---
	---	---	---

Mechanical Specifications

Minimum Bend Radius, in. (mm)		5.0	(127)
Product Weight	(less reel)	238	(354)

Customers are reminded that they are SOLELY responsible for confirming that all products are properly installed and used in accordance with all applicable codes and regulations.

Document: tx10715ms 188_3.0ghz19.docx
 Revision: 2019-09-10
 Page: 1 of 2

Amphenol Broadband Solutions.
 358 Hall Avenue
 Wallingford, CT 06492
 Toll Free +1-800-677-2288
 Toll +1-434-432-1800
 Fax +1-434-432-1821
 www.timesfiber.com

uncontrolled copy

All Rights Reserved,
 Specifications subject to change without notice

Electrical Specifications

Impedance, Ω	75 \pm 2	
Velocity of Propagation, %	88	
Capacitance, Nominal	15.3 pF/ft	50.0 pF/m
DC Resistance	Ω / kft	Ω / km
Inner Conductor	0.58	1.90
Outer Conductor	0.42	1.38
Loop	1.00	3.28

Attenuation, Maximum @ 68 °F (20 °C)

Frequency, MHz	dB / 100 ft	dB / 100 m
5	0.11	0.36
55	0.36	1.18
85	0.47	1.54
211	0.74	2.43
250	0.81	2.66
270	0.84	2.76
300	0.89	2.92
330	0.94	3.08
350	0.97	3.18
400	1.05	3.44
450	1.12	3.67
500	1.19	3.90
550	1.25	4.10
600	1.31	4.30
750	1.49	4.89
870	1.63	5.35
1002	1.75	5.74
1100	1.86	6.10
1200	1.95	6.40
1218	1.96	6.43
1300	2.04	6.69
1400	2.13	6.99
1625	2.22	7.28
1600	2.30	7.55
1700	2.38	7.81
1794	2.46	8.07
1800	2.46	8.07
2000	2.62	8.60
2200	2.77	9.09
2400	2.92	9.58
2600	3.06	10.04
2800	3.20	10.50
3000	3.33	10.93

Structural Return Loss

MHz		dB
	5-1002	-30

Customers are reminded that they are SOLELY responsible for confirming that all products are properly installed and used in accordance with all applicable codes and regulations.

Document: tx10715ms 188_3.0ghz19.docx
Revision: 2019-09-10
Page: 2 of 2

uncontrolled copy

All Rights Reserved,
Specifications subject to change without notice

Amphenol Broadband Solutions.
358 Hall Avenue
Wallingford, CT 06492
Toll Free +1-800-677-2288
Toll +1-434-432-1800
Fax +1-434-432-1821
www.timesfiber.com