

The Amphenol Indoor Fiber Drop Cables and Fiber Wand solution facilitate quick installations from the outside DMARC to inside the living unit using factory terminated cables. The Fiber Wand provides a reliable way to run terminated fiber connectors quickly and safely through 3/8" wall penetrations.

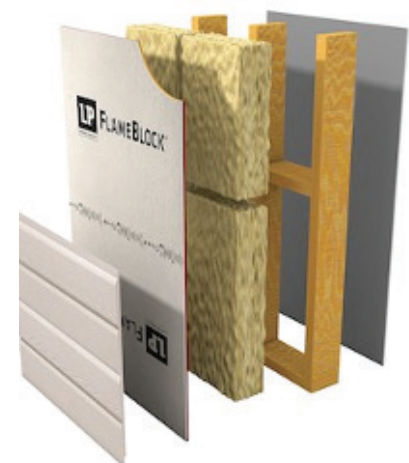
The **Indoor Drop Cables** feature 4.8mm OD indoor/outdoor rated cable with 3.0mm subunits. These come coiled and terminated with SC connectors on each end. The SC UPC end ships without the connector housing attached allowing it to fit into the Fiber Wand. After installation, the housing is easily snapped onto the connector.

The **Fiber Wand** is 8 inches and consists of two pieces that intuitively and securely snap together using magnet technology holding the SC connector inside. For separation, the wand features convenient tabs on the cable exit end.



Features:

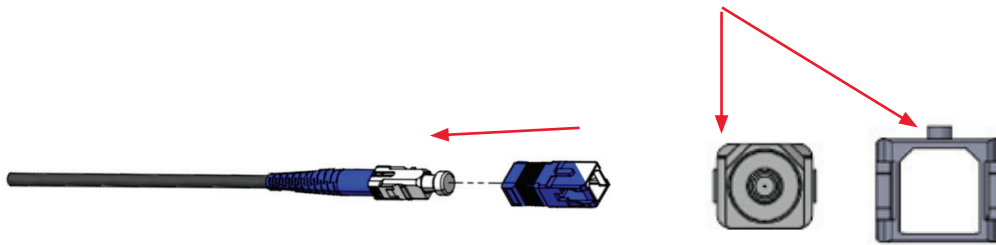
- Faster installation times by using factory terminated indoor drops
- Protects pre-terminated fiber connectors when penetrating exterior and interior walls
- Quickly attaches to the SC connectors using magnet technology.
- No tools required for attachment or release
- Glows in the dark for better visibility in basement, crawlspace and dark space installations
- Extra long for penetration through block, concrete and framed walls
- The push wand is reusable and non-conductive



Connector Housing Attachment:

The SC connector housing slides onto the connector body. Attention needs to be given to the chamfer on the connector body and the housing. It is important that these line up as the housing snaps onto the body with a click. A gentle pull on the connector ensures the assembly is complete.

Note chamfer locations on body and connector.



Ordering Information:

ABS Part Number	Description
C6547-DZ10	Push-wand for SC connectors - Glow in the dark 8" 10PK
C6543-0025F	Drop, SM SCA-SCU f/u/w Push-wand I/O 4.8mm A2 Black 25'
C6543-0050F	Drop, SM SCA-SCU f/u/w Push-wand I/O 4.8mm A2 Black 50'
C6543-0075F	Drop, SM SCA-SCU f/u/w Push-wand I/O 4.8mm A2 Black 75'
C6543-0100F	Drop, SM SCA-SCU f/u/w Push-wand I/O 4.8mm A2 Black 100'
C6544-0025F	Drop, SM SCA-SCA f/u/w Push-wand I/O 4.8mm A2 Black 25'
C6544-0050F	Drop, SM SCA-SCA f/u/w Push-wand I/O 4.8mm A2 Black 50'
C6544-0075F	Drop, SM SCA-SCA f/u/w Push-wand I/O 4.8mm A2 Black 75'
C6544-0100F	Drop, SM SCA-SCA f/u/w Push-wand I/O 4.8mm A2 Black 100'
C6545-0025F	Drop, SM SCA-SCU f/u/w Push-wand I/O 4.8mm A2 Neutral 25'
C6545-0050F	Drop, SM SCA-SCU f/u/w Push-wand I/O 4.8mm A2 Neutral 50'
C6545-0075F	Drop, SM SCA-SCU f/u/w Push-wand I/O 4.8mm A2 Neutral 75'
C6545-0100F	Drop, SM SCA-SCU f/u/w Push-wand I/O 4.8mm A2 Neutral 100'
C6546-0025F	Drop, SM SCA-SCA f/u/w Push-wand I/O 4.8mm A2 Neutral 25'
C6546-0050F	Drop, SM SCA-SCA f/u/w Push-wand I/O 4.8mm A2 Neutral 50'
C6546-0075F	Drop, SM SCA-SCA f/u/w Push-wand I/O 4.8mm A2 Neutral 75'
C6546-0100F	Drop, SM SCA-SCA f/u/w Push-wand I/O 4.8mm A2 Neutral 100'