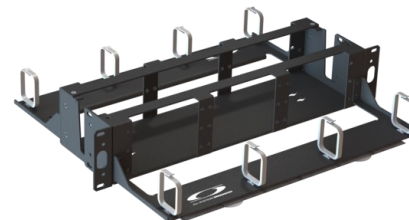


Amphenol Broadband Solutions offers a High Density Back-to-Back Premises Bracket designed for customer premises applications where higher capacity may be needed for multiple fiber and/or wavelength based services.

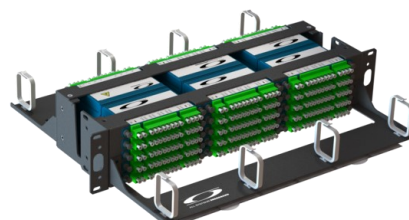
This bracket takes advantage of the industry-leading density of ABS's HiD4 cassette to pack much greater fiber capacity into 2RU of space; resulting in a best-in-class achievement of 210 ports per RU. Different HiD4 cassette configurations may be utilized in the bracket to bring customized services to commercial customers.

Because the bracket utilizes industry-standard LGX® dimensioning, it provides a mounting option for standard density LGX modules and the high density HiD4 cassette; resulting in a migration path for future product deployments. LGX adapter panels can also be installed for standard patching applications.

The Back-to-Back design allows cassettes to be installed on both the front and rear panels that results in optimal density with a small 2RU footprint. Cable management is available for both front and rear access.



2RU High Density B2B Bracket



2RU High Density B2B Bracket Equipped with 30 HiD4 Modules

Features:

- Compact 2RU footprint
- HiD4 & LGX cassette compatibility
- Front & rear access for Back-to-Back cassette mounting
- High Density cassette capacity
 - ◊ 30 HiD4 cassettes (15 front, 15 rear)
 - ◊ 12 Mini-LGX cassettes (6 front, 6 rear)
 - ◊ 6 LGX cassettes (6 front)
- Chassis designed to expose cassette label information
- Variety of options for wall or rack mounting:
 - ◊ 19" or 23" rack mount
 - ◊ Flush mount for 4-post frames (optional)
 - ◊ Wall mount
- Port labeling provided on "slide-card" stored under the cable management brackets
- Front cable management is standard
- Rear cable management is an optional accessory
- Two ground lug attachment locations
- Generous routing rings provide jumper management
- Variety of LGX adapter panels available (full or narrow width)

Specifications

Rack Utilization:	2RU
Height:	3.5"
Width:	19"
Depth:	10.4" (includes front cable management tray) 15.4" (includes front and rear cable management trays)
Material:	Powder coated aluminum, black

LGX® is a registered trademark of OFS FITEL, LLC

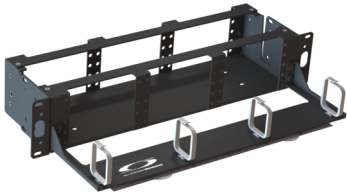
Ordering Information:

Photo	Description	Part Number
A	High Density Back-to-Back Premises Bracket, 2RU, Black	ASBMMB1024874
B	Cable Management Tray Kit, Black (for rear access)	ASBACC1024880
C	Flush Mount Bracket Kit for 4-Post Frames, Black	ASBACC1024881
*D	CWDM, HiD4, MUX, 8ch, 1471, 1310EXP, LC/APC, Tx/Rx Test Port	ASBPCW1022056
*D	CWDM, HiD4e, EPON MUX, 8ch, Tx Test Port, LC/APC	ASBPCW1023330
*E	CWDM, HiD4, MUX, 10ch, 1431, 1310 EXP, LC/APC	ASBPCW1023140
*E	CWDM, HiD4, MUX, 10ch, 1431, Tx/Rx Test Ports 1310 EXP, LC/APC	ASBPCW1023786
*F	CWDM, Mini-LGX, Dual 8ch MUX, 1471, Tx/Rx Test Ports, 1310 EXPLC/APC	ASBPCW1023169
*F	Hospitality 2 Wide Band, 4ch CWDM, Mini-LGX, DEMUX, SC/APC	ASBPCW1022643
*D	DWDM, HiD4, MUX, 100GHz, 8ch, 52, UPG, LC/APC	ASBPDW1024530-52
*D	DWDM, HiD4 DEMUX, 100GHz, 8ch, 52, UPG, LC/APC	ASBPDW1024739-52
*D	Splitter, HiD4 Cassette, 1x8, LC/APC	ASBPSP1023782
*D	Splitter, HiD4 Cassette, 1x2 Quad(x4), LC/APC	ASBPSP1024254
G	Blank, Panel Assembly, Narrow Width	ASBMMB1024709
H	SC/APC Simplex SM 6pk Panel Assembly, Narrow Width	ASBMMB1024725
I	SC/UPC Simplex SM 6pk Panel Assembly, Narrow Width	ASBMMB1024882
J	LC/APC Duplex SM 6pk Panel Assembly, Narrow Width	ASBMMB1024883
K	LC/UPC Duplex SM 6pk Panel Assembly, Narrow Width	ASBMMB1024884

(*) Photos are representative of the general form factor for these items.

Full width LGX adapter panels can also be installed in this bracket. Refer to the datasheet of our 2RU Multimedia Faceplate & Panels for part numbers and details.

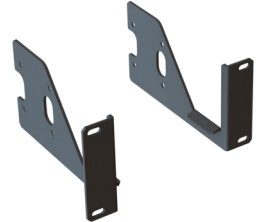
Ordering Information Continued:



A. ASBMMB1024874



B. ASBACC1024880



C. ASBACC1024881



*D. HiD4 (Reference)



*E. HiD4 (Reference)



*F. Mini-LGX (Reference)



G. ASBMMB1024709



H. ASBMMB1024725



I. ASBMMB1024882



J. ASBMMB1024883



K. ASBMMB1024884