

The next generation of DOCSIS amplifier and other active devices are placing increasing thermal and space demands on the outside plant. Amphenol has engineered a next generation amplifier pedestal that has been thermally optimized and can passively dissipate over 100W in a small 30" x 20" footprint. With constraints from municipalities and homeowners on the size and obtrusiveness of installed pedestals, the new Z08 can help providers expedite new deployments.

The Z08 series provides excellent thermal performance in the smallest footprint possible to house next generation amplifiers and other powered devices. With a smaller footprint, the units also provide lower installation costs.

The Z08 is available in light green or dark green domes with a black base. The units feature a self-latching 7/16" hex head bolt. They come with a low profile upright and hanger bracket for easy attachment of active devices along with passive devices.

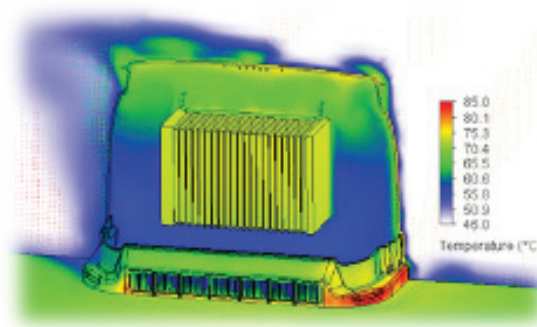


Z08 Series

## Features:

- High-density engineered venting provides optimized heat dissipation for next generation amplifiers and devices
- Insect resistant vents prevent wasp and bee intrusion, protecting technicians accessing the enclosure
- Self-latching dome locking system reduces unlocked pedestals and unwanted access
- Self-supporting base requires no additional mounting stake
- Molded in ground line for consistent installations
- Corrosion resistant stainless steel brackets and hardware for long service life

## Thermal Performance:

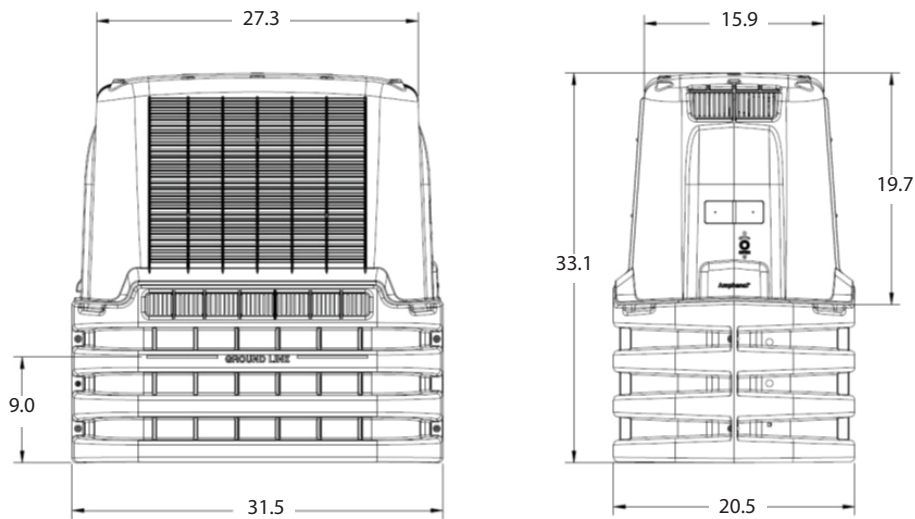


Amphenol conducts advanced thermal modeling during design, and conducts actual device testing in Z08 pedestals to validate passive heat dissipation to TIA 487-GR-CORE standard.

Internal Bracket:



Dimensions Views:



All measurements in inches.

Ordering Information:

ABS Part No.	Description	Skid Qty
Z08SS07-20002BK	20"H x 28"W x 16"D amp pedestal, 7/16" hex head lock, light green dome, black base, low profile bracketry	6
Z08SS07-40002BK	20"H x 28"W x 16"D amp pedestal, 7/16" hex head lock, dark green dome, black base, low profile bracketry	6