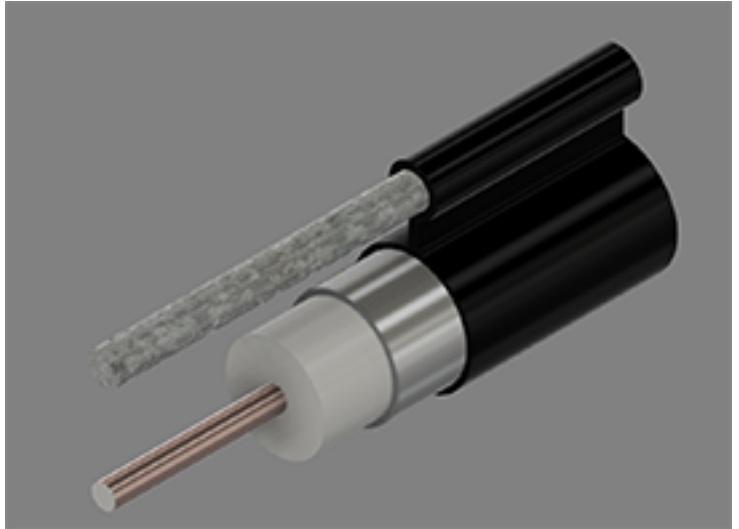




750 Series Coaxial Cable
Copper Clad Aluminum Conductor
Foamed Polyethylene Dielectric
Seamless Aluminum Tube Outer Conductor
Medium Density Polyethylene Jacket
0.188" Galvanized Steel Messenger



Cable Ordering Information

Part Number	Description	NEC / CE Listing
750750MS00BK11000001	T10750MS / 188 MESS	

Characteristics

Material	Detail	inches	mm
Inner Conductor	Copper Clad Aluminum	0.166	4.22
Dielectric	Foamed Polyethylene	0.678	17.2
Outer Conductor	Seamless Aluminum Tube	0.750	19.1
Floodant	---	---	---
Jacket	Polyethylene, Outdoor, Black	0.820	20.8
Messenger	Galvanized Steel	0.188	4.78
Cable Width	---	1.215	30.9
	---	---	---
	---	---	---

Mechanical Specifications

Minimum Bend Radius, in. (mm)		6.0	(152)
Product Weight	(less reel)	289	(430)

Customers are reminded that they are SOLELY responsible for confirming that all products are properly installed and used in accordance with all applicable codes and regulations.

Document: t10750ms 188_3.0ghz19.docx
Revision: 2019-09-10
Page: 1 of 2

Amphenol Broadband Solutions.
358 Hall Avenue
Wallingford, CT 06492
Toll Free +1-800-677-2288
Toll +1-434-432-1800
Fax +1-434-432-1821
www.timesfiber.com

uncontrolled copy

All Rights Reserved,
Specifications subject to change without notice

Electrical Specifications

Impedance, Ω	75 \pm 2	
Velocity of Propagation, %	87	
Capacitance, Nominal	15.3 pF/ft	50.2 pF/m
DC Resistance	Ω / kft	Ω / km
Inner Conductor	0.58	1.90
Outer Conductor	0.17	0.56
Loop	0.75	2.46

Attenuation, Maximum @ 68 °F (20 °C)

Frequency, MHz	dB / 100 ft	dB / 100 m
5	0.11	0.36
55	0.37	1.21
85	0.46	1.51
211	0.73	2.40
250	0.81	2.66
270	0.84	2.76
300	0.89	2.92
330	0.94	3.08
350	0.97	3.18
400	1.05	3.44
450	1.12	3.67
500	1.18	3.87
550	1.25	4.10
600	1.31	4.30
750	1.48	4.86
870	1.61	5.28
1002	1.74	5.71
1100	1.84	6.04
1200	1.93	6.33
1218	1.94	6.36
1300	2.01	6.59
1400	2.10	6.89
1625	2.18	7.15
1600	2.26	7.41
1700	2.34	7.68
1794	2.42	7.94
1800	2.43	7.97
2000	2.60	8.53
2200	2.75	9.02
2400	2.90	9.51
2600	3.04	9.97
2800	3.18	10.43
3000	3.32	10.89

Structural Return Loss

MHz		dB
	5-1002	-30

Customers are reminded that they are SOLELY responsible for confirming that all products are properly installed and used in accordance with all applicable codes and regulations.

Document: t10750ms 188_3.0ghz19.docx
Revision: 2019-09-10
Page: 2 of 2

uncontrolled copy

All Rights Reserved,
Specifications subject to change without notice

Amphenol Broadband Solutions.
358 Hall Avenue
Wallingford, CT 06492
Toll Free +1-800-677-2288
Toll +1-434-432-1800
Fax +1-434-432-1821
www.timesfiber.com