

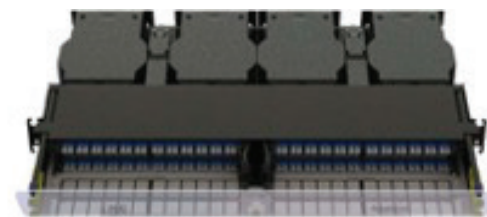
LiNC™ is Amphenol's revolutionary rapid-deployment multi-fiber end-to-end connectivity solution. LiNC consists of our streamlined 1RU 19/23" rack/cabinet mount LiNC chassis, up to four 12 or 24 fiber LiNC MPO breakout modules, and the time-saving option of ready-to-use 12/24F MPO-MPO or MPO-LC factory integrated spooled trunk cables, with up to 200 feet of fiber for rapid deployment.

The LiNC system provides instantaneous 12/24 Fiber MPO-MPO or MPO-LC trunk cable deployment with 12 or 24 breakout ports – just unspool the factory terminated cable assembly from the near-end chassis integrated reel and run the cable to the far-end LiNC chassis equipped with the MPO 12/24F breakout module or terminate to a 12/24F MPO connector or 12/24F LC connectors for highly reliable, high-performance fiber networks. The chassis-mount reel of 12/24F trunk cable eliminates the need to engineer exact lengths and then wait for cable fabrication and delivery. Unspooling just the exact cable length needed eliminates the slack management issues that come from ordering cable assemblies with added-in slack margin. LiNC eliminates the need for pre-engineered fiber runs by installers or technicians.

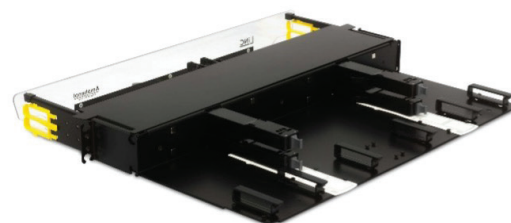
Amphenol's LiNC takes the complexity out of fiber deployment with its ready-to-use MPO plug-and-go technology. It is cost-effective, reliable, and easy to install for instantaneous deployment in central offices, data centers, headends, PONs and premise LAN applications.

### Features:

- Orderable as complete system, or near-end and far-end elements.
- 1RU Chassis supports up to four integrated spools
- Up to 48 SC or 96 LC breakout ports
- Up to four 12F and 24F MPO LiNC modules per chassis
- Up to four rapid-deployable MPO-MPO or MPO-LC connectorized factory spooled trunk cables per chassis
- Eliminates the need to manage fiber slack storage
- Hassle free magnetic quick view clear front door
- Chassis slide-back top cover for ease of access
- Designed for simplified connector cleaning process
- Single-handed module pull-out to access LC or SC connectors safely and securely



LiNC™ with 96 LCU 4x24F MPO Spooled



LiNC Rear View with cable managers, and without spools

### Specifications

Chassis Dimensions	18.6"W x 14.3"D x 1.75"H
Chassis Mounting	19 in, 23 in EIA or WECCO
Trunk Spool Qty per chassis	4
Trunk Spool Max Length*	200 FT* with 12F/24F
Distribution Connector Types	LC/UPC, LC/APC, SC/UPC, SC/APC, SC/MM
Ports per LiNC Module	12 SC or LC, 24 LC
Ports per LiNC Chassis	48 SC, 96 LC
Fiber Modes	SM - G.657.A1, MM - OM4 MM
Trunk Spool Connector (Far-End)	MPO (Pinned) or (Unpinned)
LiNC Module Trunk Connector	MPO (Unpinned)
MPO Trunk Fiber Capacity (Size)	12 Fiber (2mm) or 24 Fiber (2mm or 3mm)

\* Longer lengths available with auxiliary spools.

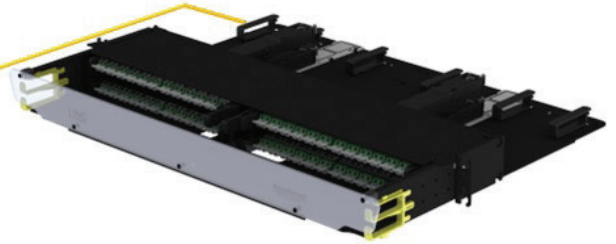


LiNC Spool Assembly

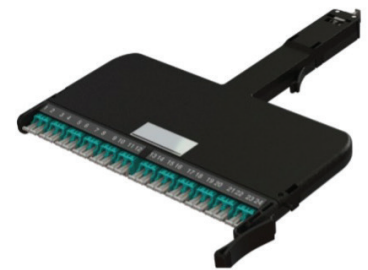
Configurations:



Near-end (LiNC with Spools)



Far-end (LiNC without Spools)



LiNC Modules from Left to Right: LC/UPC, LC/APC, and LC Multimode



LiNC Spool Assembly with LC breakout connectors

Ordering Information	
<b>PAIRED SOLUTION KITS*</b>	<b>INCLUDES NEAR &amp; FAR END LiNC PANELS, BREAKOUT MODULES &amp; SPOOLS</b>
LINC-01UK-48LCU3-100F	LINC SYS, 1U 48LCU KIT, 100F
LINC-01UK-48LCM3-200F	LINC SYS, 1U 48LC MM KIT, 200F
LINC-01UK-96LCU3-45F	LINC SYS, 1U 96LCU KIT, 45F
LINC-01UK-96LCA3-100F	LINC SYS, 1U 96LCA KIT, 100F
LINC-01UK-96LCM3-150F	LINC SYS, 1U 96LC MM KIT, 150F
LINC-01UK-96LCU3-200F	LINC SYS, 1U 96LCU KIT, 200F
<b>SPARE LiNC MODULES</b>	<b>INDIVIDUAL LiNC BREAKOUT MODULES</b>
LINC-M121LS-A	LINC MOD, 12F MPO A, LCU, SM, POS A
LINC-M121LM-B	LINC MOD, 12F MPO A, LC, MM, POS B
LINC-M121LS-C	LINC MOD, 12F MPO A, LCU, SM, POS C
LINC-M121LS-D	LINC MOD, 12F MPO A, LCU, SM, POS D
LINC-M241LS-L	LINC MOD, 24F MPO A, LCU, SM, LEFT
LINC-M241LM-R	LINC MOD, 24F MPO A, LC, MM, RIGHT
<b>TRUNK SPOOLS**</b>	<b>INDIVIDUAL LiNC TRUNK SPOOLS</b>
LINC-S121FF-SC-100F-A	LINC SPL,HBC SM,12F MPO-MPO A,100F
<b>Fanout designed to terminate to rear C2X:</b>	<b>SPOOL ASSY:CARTRIDGE,OFNP,SM BIF,24F,ULL MPO(24)(F),45FT,3MM,MINI BOOT,A POL</b>
LINC-S241FL-SC-045F-X3A	LINC SPL,HBC SM,24F MPO-LCU A,45F,C2X
LINC-S241FL-SC-100F-X3A	LINC SPL,HBC SM,24F MPO-LCU A,100F,C2X
LINC-S241FL-SC-150F-X3A	LINC SPL,HBC SM,24F MPO-LCU A,150F,C2X
LINC-S241FL-SC-200F-X3A	LINC SPL,HBC SM,24F MPO-LCU A,200F,C2X
<b>Fanout designed to terminate to rear LCX:</b>	
LINC-S241FL-SC-045F-STA	LINC SPL,HBC SM,24F MPO-LCU A,45F,LCX
<b>Fanout designed to terminate to rear DCS:</b>	
LINC-S241FL-SC-100F-DCA	LINC SPL,HBC SM,24F MPO-LCU A,100F DCS
<b>Fanout designed to terminate to rear NG4 A-L:</b>	
LINC-S241FL-SC-045F-NAA	LINC SPL,HBC SM,24F MPO-LCU A, 45F,NG4L
LINC-S241FL-SC-100F-NAA	LINC SPL,HBC SM,24F MPO-LCU A,100F,NG4L
LINC-S241FL-SC-150F-NAA	LINC SPL,HBC SM,24F MPO-LCU A,150F,NG4L
LINC-S241FL-SC-200F-NAA	LINC SPL,HBC SM,24F MPO-LCU A, 200F,NG4L
<b>Fanout designed to terminate to rear NG4 M-X:</b>	
LINC-S241FL-SC-045F-NMA	LINC SPL,HBC SM,24F MPO-LCU A, 45F,NG4R
LINC-S241FL-SC-100F-NMA	LINC SPL,HBC SM,24F MPO-LCU A,100F,NG4R
LINC-S241FL-SC-150F-NMA	LINC SPL,HBC SM,24F MPO-LCU A,150F,NG4R
LINC-S241FL-SC-200F-NMA	LINC SPL,HBC SM,24F MPO-LCU A, 200F,NG4R
* Additional solution kits available.	
** Example available Trunk Spool part numbers. Additional configurable options available.	
<b>LiNC EMPTY CHASSIS</b>	
LINC-01U	LINC 1RU CHASSIS, 19/23IN, HOLDS 4 MODS