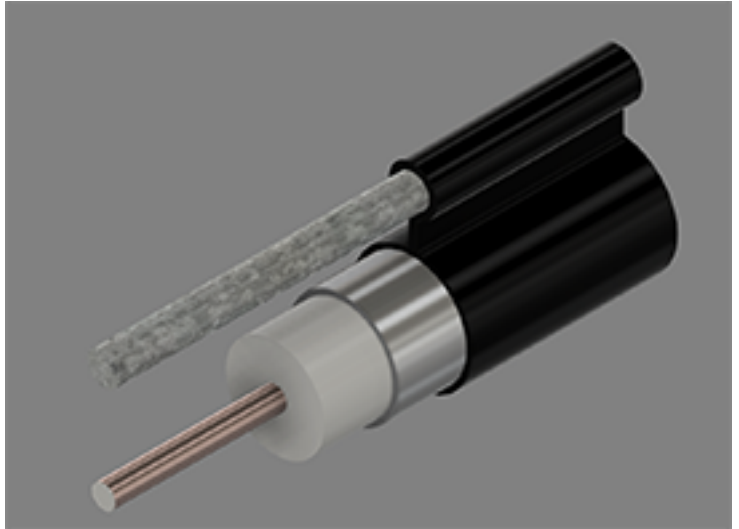


700 Series Coaxial Cable  
 Copper Clad Aluminum Conductor  
 Foamed Polyethylene Dielectric  
 Seamless Aluminum Tube Outer Conductor  
 Medium Density Polyethylene Jacket  
 0.188" Galvanized Steel Messenger



**Cable Ordering Information**

Part Number	Description	NEC / CE Listing
750700MS00BK11000001	TX10700MS / 188 MESS	

**Characteristics**

Material	Detail	inches	mm
Inner Conductor	Copper Clad Aluminum	0.163	4.14
Dielectric	Foamed Polyethylene	0.653	16.6
Outer Conductor	Seamless Aluminum Tube	0.703	17.9
Floodant	---	---	---
Jacket	Polyethylene, Outdoor, Black	0.765	19.4
Messenger	Galvanized Steel	0.188	4.78
Cable Width	---	1.160	29.5
	---	---	---
	---	---	---

**Mechanical Specifications**

Minimum Bend Radius, in. (mm)		6.5	( 165)
Product Weight	(less reel)	247	( 368)

Customers are reminded that they are SOLELY responsible for confirming that all products are properly installed and used in accordance with all applicable codes and regulations.

Document: tx10700ms 188\_3.0ghz19.docx  
 Revision: 2019-09-10  
 Page: 1 of 2

Amphenol Broadband Solutions.  
 358 Hall Avenue  
 Wallingford, CT 06492  
 Toll Free +1-800-677-2288  
 Toll +1-434-432-1800  
 Fax +1-434-432-1821  
 www.timesfiber.com

**uncontrolled copy**

All Rights Reserved,  
 Specifications subject to change without notice

**Electrical Specifications**

Impedance, $\Omega$	75 $\pm$ 2	
Velocity of Propagation, %	89	
Capacitance, Nominal	15.2 pF/ft	49.9 pF/m
DC Resistance	$\Omega$ / kft	$\Omega$ / km
Inner Conductor	0.60	1.97
Outer Conductor	0.25	0.82
Loop	0.85	2.79

**Attenuation, Maximum @ 68 °F (20 °C)**

Frequency, MHz	dB / 100 ft	dB / 100 m
5	0.11	0.36
55	0.37	1.21
85	0.47	1.54
211	0.75	2.46
250	0.82	2.69
270	0.85	2.79
300	0.90	2.95
330	0.95	3.12
350	0.98	3.22
400	1.05	3.44
450	1.12	3.67
500	1.19	3.90
550	1.25	4.10
600	1.32	4.33
750	1.49	4.89
870	1.62	5.31
1002	1.75	5.74
1100	1.88	6.17
1200	1.95	6.40
1218	1.96	6.43
1300	2.06	6.76
1400	2.15	7.05
1625	2.24	7.35
1600	2.32	7.61
1700	2.41	7.91
1794	2.48	8.14
1800	2.49	8.17
2000	2.65	8.69
2200	2.80	9.19
2400	2.95	9.68
2600	3.09	10.14
2800	3.23	10.60
3000	3.37	11.06

**Structural Return Loss**

MHz		dB
	5-1002	-30

Customers are reminded that they are SOLELY responsible for confirming that all products are properly installed and used in accordance with all applicable codes and regulations.

Document: tx10700ms 188\_3.0ghz19.docx  
Revision: 2019-09-10  
Page: 2 of 2

**uncontrolled copy**

All Rights Reserved,  
Specifications subject to change without notice

Amphenol Broadband Solutions.  
358 Hall Avenue  
Wallingford, CT 06492  
Toll Free +1-800-677-2288  
Toll +1-434-432-1800  
Fax +1-434-432-1821  
www.timesfiber.com