

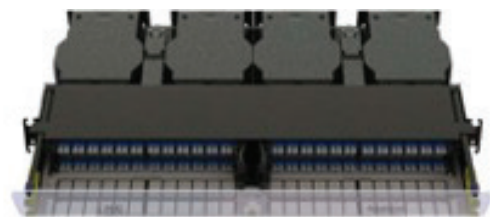
LiNC™ is Amphenol's revolutionary rapid-deployment multi-fiber end-to-end connectivity solution. LiNC consists of our streamlined 1RU 19/23" rack/cabinet mount LiNC chassis, up to four 12 or 24 fiber LiNC MPO breakout modules, and the time-saving option of ready-to-use 12/24F MPO-MPO or MPO-LC factory integrated spooled trunk cables, with up to 200 feet of fiber for rapid deployment.

The LiNC system provides instantaneous 12/24 fiber MPO-MPO or MPO-LC trunk cable deployment with 12 or 24 breakout ports – just unspool the factory terminated cable assembly from the near-end chassis integrated reel and run the cable to the far-end LiNC chassis equipped with the MPO 12/24F breakout module or terminate to a 12/24F MPO connector or 12/24F LC connectors for highly reliable, high-performance fiber networks. The chassis-mount reel of 12/24F trunk cable eliminates the need to engineer exact lengths and then wait for cable fabrication and delivery. Unspooling just the exact cable length needed eliminates the slack management issues that come from ordering cable assemblies with added-in slack margin. LiNC eliminates the need for pre-engineered fiber runs by installers or technicians.

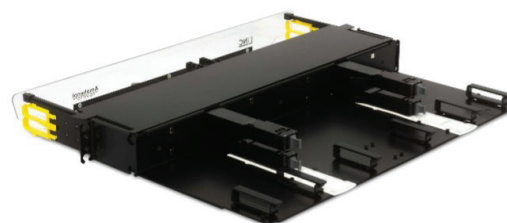
Amphenol's LiNC takes the complexity out of fiber deployment with its ready-to-use MPO plug-and-go technology. It is cost-effective, reliable, and easy to install for instantaneous deployment in central offices, data centers, headends, PONs and premise LAN applications.

## Features:

- Orderable as a complete system, or near-end and far-end elements.
- 1RU Chassis supports up to four integrated spools
- Up to 48 SC or 96 LC breakout ports
- Up to four 12F and 24F MPO LiNC modules per chassis
- Up to four rapid-deployable MPO-MPO or MPO-LC connectorized factory spooled trunk cables per chassis
- Eliminates the need to manage fiber slack storage
- Hassle free magnetic quick view clear front door
- Chassis slide-back top cover for ease of access
- Designed for simplified connector cleaning process
- Single-handed module pull-out to access LC or SC connectors safely and securely



LiNC™ with 96 LCU 4x24F MPO Spooled



LiNC Rear View with cable managers, and without spools

## Specifications

Chassis Dimensions	18.6"W x 14.3"D x 1.75"H
Chassis Mounting	19", 23" EIA or WECCO
Trunk Spool Qty per chassis	4
Trunk Spool Max Length*	200 FT* with 12F/24F
Distribution Connector Types	LC/UPC, LC/APC, SC/UPC, SC/APC, SC/MM
Ports per LiNC Module	12 SC or LC, 24 LC
Ports per LiNC Chassis	48 SC, 96 LC
Fiber Modes	SM - G.657.A1, MM - OM4 MM
Trunk Spool Connector (Far-End)	MPO (Pinned) or (Unpinned)
LiNC Module Trunk Connector	MPO (Unpinned)
MPO Trunk Fiber Capacity (Size)	12 Fiber (2mm) or 24 Fiber (2mm or 3mm)

\* Longer lengths available with auxiliary spools.

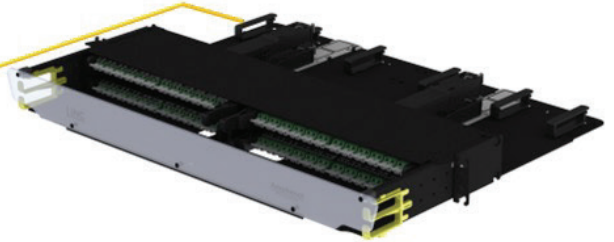


LiNC Spool Assembly

Configurations:



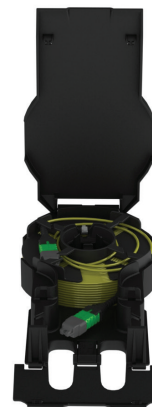
Near-end (LiNC with Spools)



Far-end (LiNC without Spools)



LiNC Modules from Left to Right: LC/UPC, LC/APC, and LC Multimode



Trunk Spools

## Ordering Information

CIFA NUMBER	DESCRIPTION	ABS PART NUMBER
<b>*Paired Solution Kits: Included Near &amp; Far End LiNC Panels, Breakout Modules &amp; Spools</b>		
TBD	LiNC SYS, 1RU 96 LCA KIT, 45F	LINC-1UK-96LCA2-45F
308725	LiNC SYS, 1RU 96 LCA KIT, 100F	LINC-1UK-96LCA2-100F
308726	LiNC SYS, 1RU 96 LCA KIT, 150F	LINC-1UK-96LCA2-150F
308727	LiNC SYS, 1RU 96 LCA KIT, 200F	LINC-1UK-96LCA2-200F
TBD	LiNC SYS, 1RU 48 LCU Kit, xxxF	LINC-01UK-48LCU3-xxxF
TBD	LiNC SYS, 1RU 48 LC MM Kit, xxxF	LINC-01UK-48LCM3-xxxF
TBD	LiNC SYS, 1RU 96 LCU Kit, xxxF	LINC-01UK-96LCU3-xxxF
TBD	LiNC SYS, 1RU 96 LCA Kit, xxxF	LINC-01UK-96LCA3-xxxF
TBD	LiNC SYS, 1RU 96 LCM MM Kit, xxxF	LINC-01UK-96LCM3-xxxF
These include Near & Far End LiNC Panels, Breakout Modules & Spools		
<b>Spare LiNC Modules: Individual LiNC Breakout Modules</b>		
TBD	LINC MOD, 12F MPO A, LCU, SM, POS A	LINC-M121LS-A
TBD	LINC MOD, 12F MPO A, LC, MM, POS B	LINC-M121LM-B
TBD	LINC MOD, 12F MPO A, LCU, SM, POS C	LINC-M121LS-C
TBD	LINC MOD, 12F MPO A, LCU, SM, POS D	LINC-M121LS-D
TBD	LINC MOD, 24F MPO A, LCU, SM, Left	LINC-M241LS-L
TBD	LINC MOD, 24F MPO A, LC, MM, Right	LINC-M241LM-R
<b>**Trunk Spools: Individual LiNC Trunk Spools</b>		
TBD	LINC SPL, HBC SM, 12F MPO-MPO A, 100F	LINC-S121FF-SC-100F-A
<b>LiNC Empty Chassis</b>		
TBD	LINC 1RU Chassis, 19/23IN, Holds 4 Modules	LINC-01U
* Additional solution kits available.		
** Example available Trunk Spool part numbers. Additional configurable options available.		



Installation Video