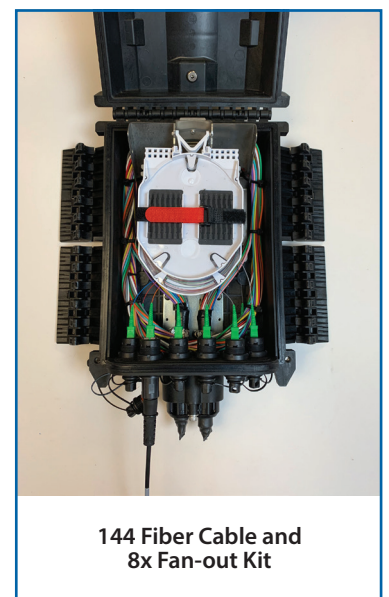
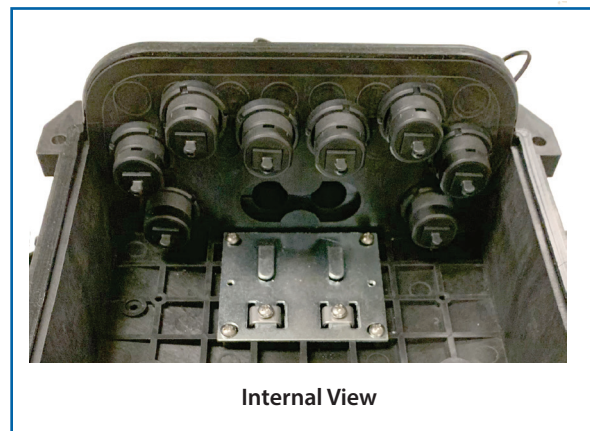
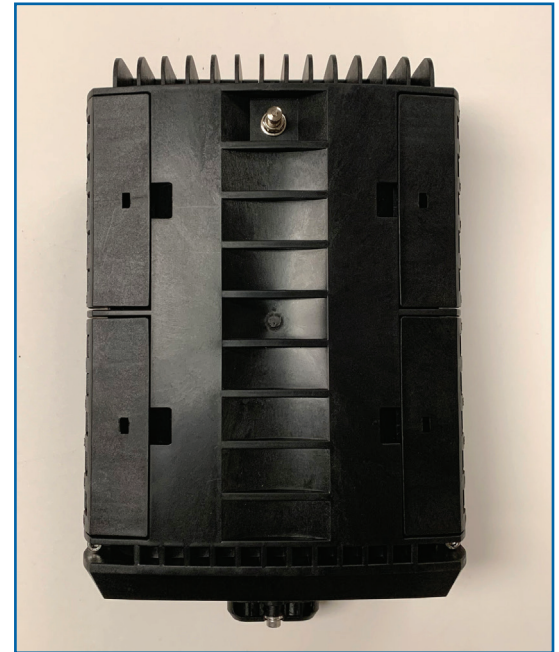


Versatile and easy-to-use fiber access closures for FTTH networks

The Amphenol fiber optic sealed drop closures (FSDC) provide a versatile and functional cost-effective solution for FTTH network connections to the subscriber. The FSDC-H series front panel has an H-connector hardened OptiTap® compatible adapter interface for simple plug and play connection of preconnectorized hardened drop cables. These closures are fully sealed units which can be mounted on a strand, a pole, or in a pedestal, as well as below ground to meet any installation topology. Although a compact size, there is ample room for express fiber storage. FSDC-H closures support a number of architectures including centralized, distributed split and distribution tap.

Features:

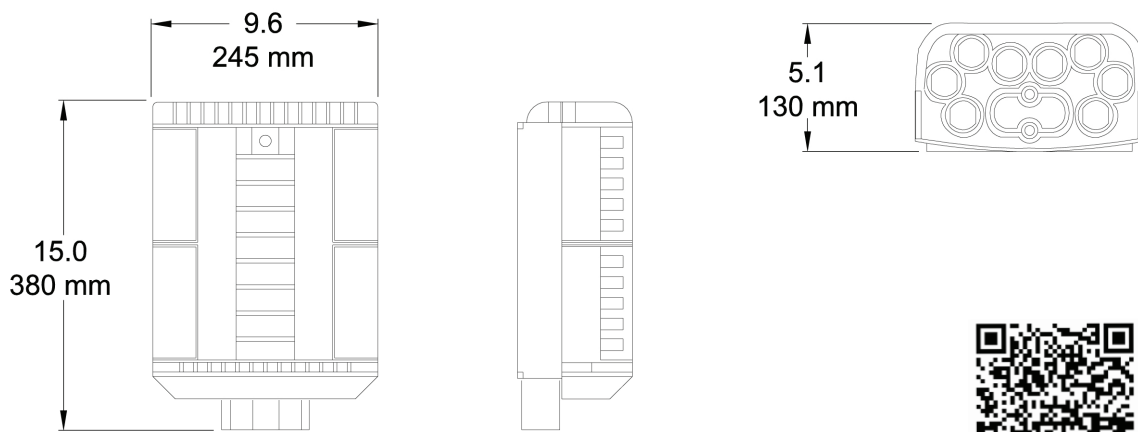
- Robust glass filled polypropylene housing to withstand acidic and alkaline environments
- Up to 48 single splices provides adequate splice capacity in a compact size
- Available with 2, 4, or 8 Amphenol H-connector to SC/APC adapter interface (OptiTap compatible)
- Spacious loose tube fiber storage in a compact size can express 144 fibers
- Mechanical compression technology provides cost-effective reliable cable sealing
- Hinged snap cover allows easy access for installation, maintenance, and upgrades
- Sealed IP68 rated for use in aerial, pole, pedestal, or below grade applications



OptiTap® is a registered trademark of Corning Communications.

Specifications

Dimensions:	15" x 9.6" x 5.1" (380mm x 245mm x 130mm)
Weight:	10lb. (4.5kg)
Feed Cable Accommodation:	Oval port: 0.393–0.689 inch (10mm–17.5mm)
Drop Ports:	2, 4, or 8 port OptiTap® compatible to SC/APC adapters
Splice Trays:	Accommodates up to two 4"x6" 24-fiber splice trays
Splitters or Pigtails:	Optional splitter trays, tap trays, or pigtail kits are available. Call for ordering information.
Environmental Rating:	IP 68



Scan QR Code for Installation Practice

Ordering Information

ABS Part No.	Description
FSDC2S02HSCPCT	CLOSURE FBR SEAL 2P HRD OPTAP, (1) 24-SPLICE TRAY, CLR PGTL KIT, (2) AERIAL BRACKETS
FSDC2S04HSCPCT	CLOSURE FBR SEAL 4P HRD OPTAP, (1) 24-SPLICE TRAY, CLR PGTL KIT, (2) AERIAL BRACKETS
FSDC2S08HSCPCT	CLOSURE FBR SEAL 8P HRD OPTAP, (1) 24-SPLICE TRAY, CLR PGTL KIT, (2) AERIAL BRACKETS